



Our Ref: MET/7/307

Date: 21 April 2025

SEVEN-DAY WEATHER FORECAST FOR 22 TO 28 APRIL 2025

SUMMARY

Forecast for 22 to 28 April 2025

- Rainfall is expected to continue over several parts of the country.
- Isolated heavy rainfall events are expected over some parts of the Highlands East and West of the Rift Valley, the Lake Victoria Basin, the Central and South Rift Valley, the Southeastern lowlands, the Coast and North-eastern Kenya.

Weather Review for 14 to 20 April 2025

- Rainfall was recorded in several parts of the country.
- Day-time (maximum) temperatures decreased over a number of stations such as Lodwar, Marsabit and Mandera but increased over others such as Machakos, Kakamega and Thika.
- Night-time (minimum) temperatures increased over some stations such as Kakamega, Laikipia and Meru and decreased over Lamu, Garissa and Lodwar among others.

1 FORECAST FOR 22 TO 28 APRIL 2025

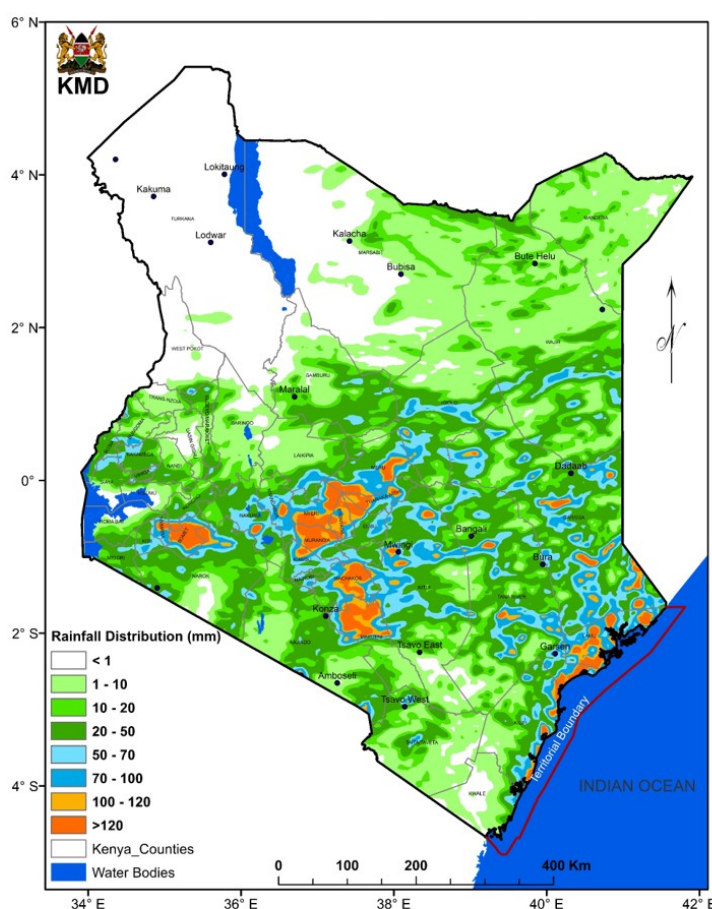


FIG 1: FORECASTED SEVEN-DAY TOTAL RAINFALL FOR 22 TO 28 APRIL 2025

Rainfall is likely to continue over several parts of the country, as shown in **Figure 1**. Isolated heavy rainfall events are expected over some parts of the Highlands East and West of the Rift Valley, the Lake Victoria Basin, the Central and South Rift Valley, the Southeastern lowlands, the Coast and North-eastern Kenya.

Average daytime (maximum) temperatures of more than 30°C will be experienced in the Coast, North-eastern and North-western Kenya as well as over isolated areas in the Highlands West of the Rift Valley, as shown in **Figure 2**.

Average night-time (minimum) temperatures will be less than 10°C in some parts of the Highlands East of the Rift Valley, the Central Rift Valley and around Mt. Kilimanjaro, as illustrated in **Figure 3**.

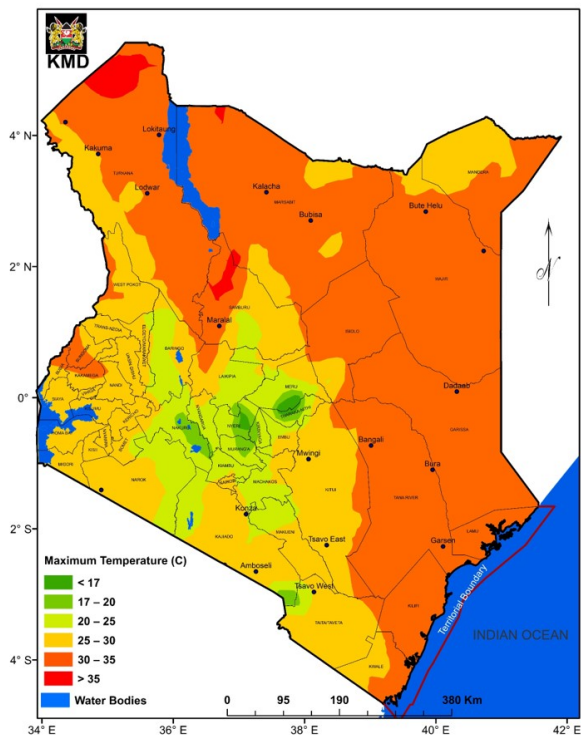


FIG 2: FORECASTED AVERAGE MAXIMUM TEMPERATURE FOR 22 TO 28 APRIL 2025

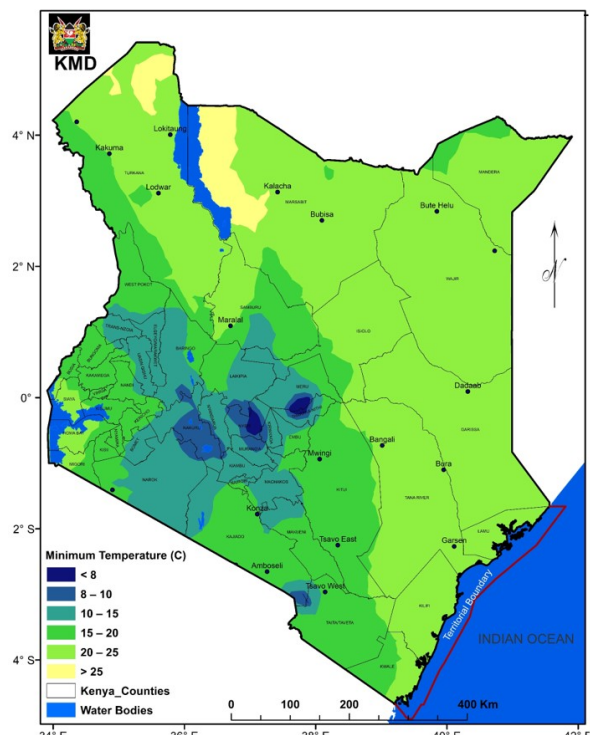


FIG 3: FORECASTED AVERAGE MINIMUM TEMPERATURE FOR 22 TO 28 APRIL 2025

1.1 DETAILED REGIONAL RAINFALL FORECAST FOR 22 TO 28 APRIL 2025

1.1.1 The Highlands West of the Rift Valley, the Lake Victoria Basin and the Rift Valley (Nandi, Kakamega, Vihiga, Bungoma, Siaya, Busia, Baringo, Nakuru, Trans-Nzoia, Uasin-Gishu, Elgeyo-Marakwet, West-Pokot, Kisii, Nyamira, Kericho, Bomet, Kisumu, Homabay, Migori and Narok Counties):

Sunny intervals are expected in the mornings though rains may occur over few places. Afternoon showers and thunderstorms are likely to occur over several places during the first half of the forecast period reducing to cover few places in the second half. Occasional night showers are expected over few places.

1.1.2 North-western Kenya (Turkana and Samburu Counties):

Morning rains as well as afternoon and night showers and thunderstorms are likely to occur over few places during the first half of the forecast period, followed by daylong sunny intervals for the rest of the period.

1.1.3 The Highlands East of the Rift Valley and Nairobi County (Nyandarua, Laikipia, Nyeri, Kirinyaga, Murang'a, Kiambu, Meru, Embu, Tharaka-Nithi and Nairobi Counties):

Morning rains are expected over few places during the first half of the forecast period. Afternoon and night showers and thunderstorms are likely to occur over several places during the first half of the forecast period reducing to few places in the second half. Night showers are expected over few places.

1.1.4 North-eastern Kenya (*Marsabit, Mandera, Wajir, Garissa and Isiolo Counties*):

Morning rains as well as afternoon and night showers and thunderstorms are likely to occur over few places, occasionally spreading to several places during the first half of the forecast period.

1.1.5 The South-eastern lowlands (*Machakos, Kitui, Makueni, Kajiado and Taita-Taveta Counties as well as the inland parts of Tana-River County*):

Morning rains as well as afternoon and night showers and thunderstorms are likely to occur over few places, occasionally spreading to several places during the first half of the forecast period.

1.1.6 The Coast (*Mombasa, Kilifi, Lamu and Kwale Counties as well as the coastal parts of Tana-River County*):

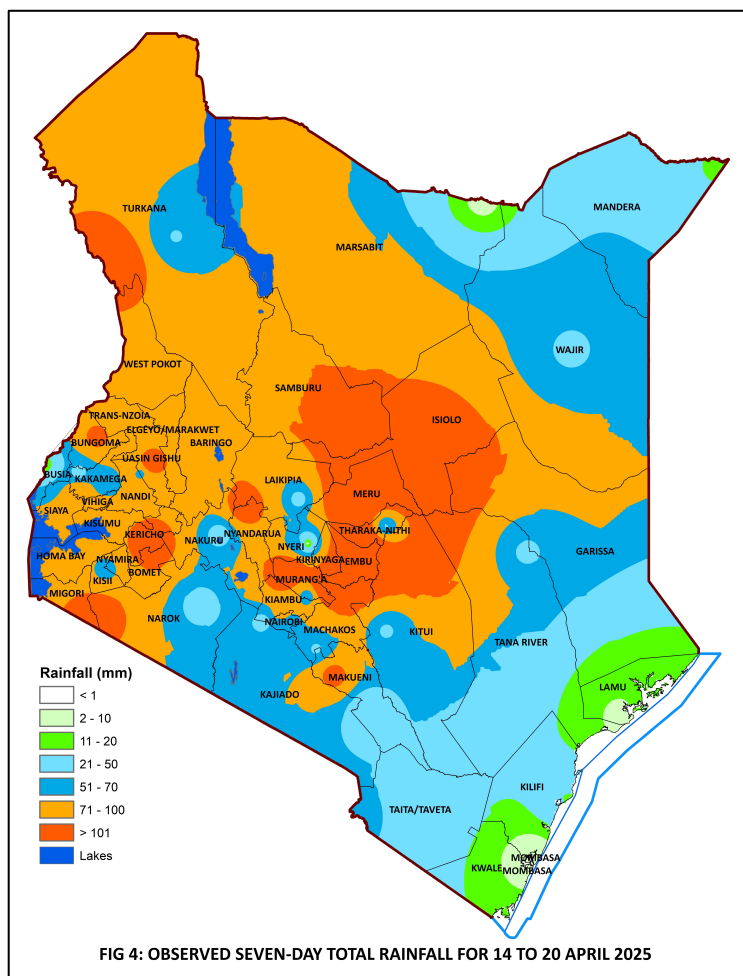
Morning, afternoon and night showers are expected over several places during the first half of the forecast period reducing to few places thereafter.

1.2 DETAILED TEMPERATURE FORECAST FOR 22 TO 28 APRIL 2025

Expected maximum and minimum temperatures for selected towns and cities are shown in **Table 1**.

| TABLE 1: FORECASTED MAXIMUM AND MINIMUM TEMPERATURES FOR SELECTED CITIES AND TOWNS | | | | | | | | |
|--|----------|----------|-----------|----------|----------|-----------|----------|----------|
| CITY/TOWN | MAX (°C) | MIN (°C) | CITY/TOWN | MAX (°C) | MIN (°C) | CITY/TOWN | MAX (°C) | MIN (°C) |
| LODWAR | 36.0 | 23.0 | KISUMU | 29.0 | 18.0 | THIKA | 29.0 | 16.0 |
| MARSABIT | 26.0 | 18.0 | SUBA | 29.0 | 19.0 | MACHAKOS | 28.0 | 13.0 |
| MOYALE | 27.0 | 20.0 | NAKURU | 27.0 | 14.0 | MAKINDU | 30.0 | 19.0 |
| GARISSA | 37.0 | 23.0 | NAROK | 25.0 | 12.0 | KITUI | 30.0 | 18.0 |
| WAJIR | 37.0 | 23.0 | LAIKIPIA | 27.0 | 11.0 | VOI | 33.0 | 21.0 |
| MANDERA | 38.0 | 23.0 | NYAHURURU | 25.0 | 07.0 | LAMU | 34.0 | 25.0 |
| KITALE | 28.0 | 15.0 | KANGEMA | 26.0 | 14.0 | MALINDI | 32.0 | 25.0 |
| KAKAMEGA | 31.0 | 16.0 | NYERI | 27.0 | 13.0 | MSABAHA | 33.0 | 25.0 |
| ELDORET | 25.0 | 13.0 | EMBU | 28.0 | 14.0 | MTWAPA | 33.0 | 25.0 |
| KERICHO | 24.0 | 12.0 | MERU | 26.0 | 13.0 | MOMBASA | 33.0 | 24.0 |
| KISII | 27.0 | 16.0 | NAIROBI | 28.0 | 13.0 | | | |

2.1.1 Rainfall Review



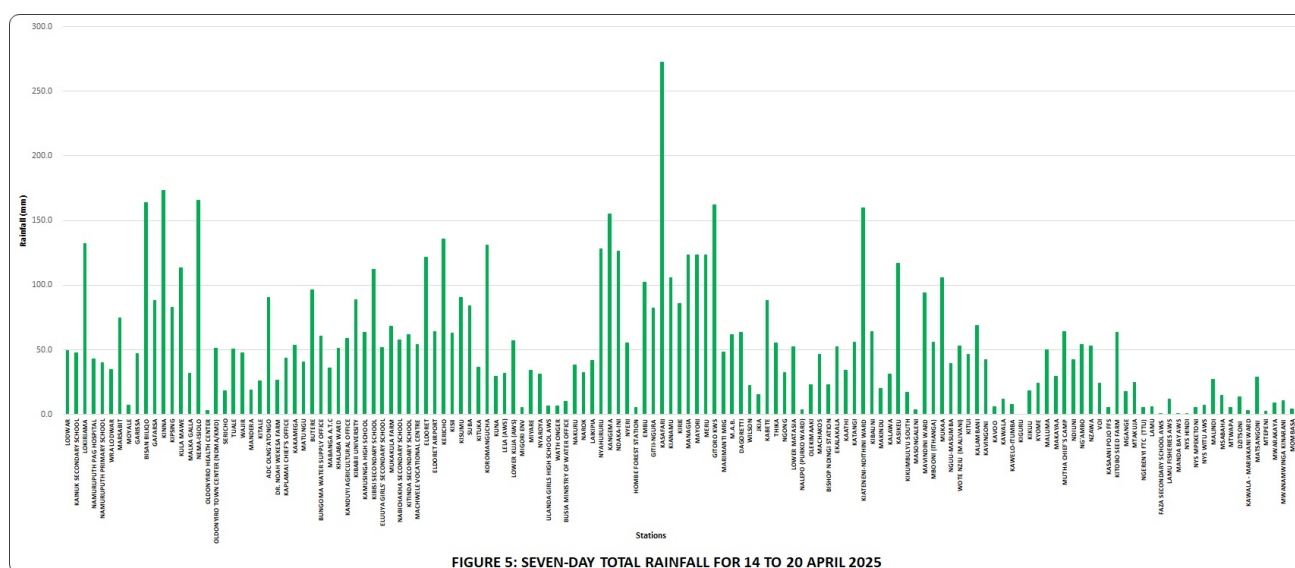
Rainfall was recorded in several parts of the country, as shown in **Figures 4 and 5**.

Heavy rainfall (more than 50mm in 24hrs) was received in a number of Counties including Makueni, Machakos, Murang'a, Embu, Meru, Isiolo, Kericho, Homa Bay, Nyandarua, Bungoma, Nairobi and Migori.

Comparing the 7 to 13 April 2025 and the 14 to 20 April 2025 periods, it is noted that rainfall amounts increased over several parts of the country most notably the Highlands East of the Rift Valley, the South-eastern lowlands, North-eastern and North-western Kenya.

The highest seven-day rainfall total (272.5mm) was recorded at Kasafari Rainfall Station in Embu County.

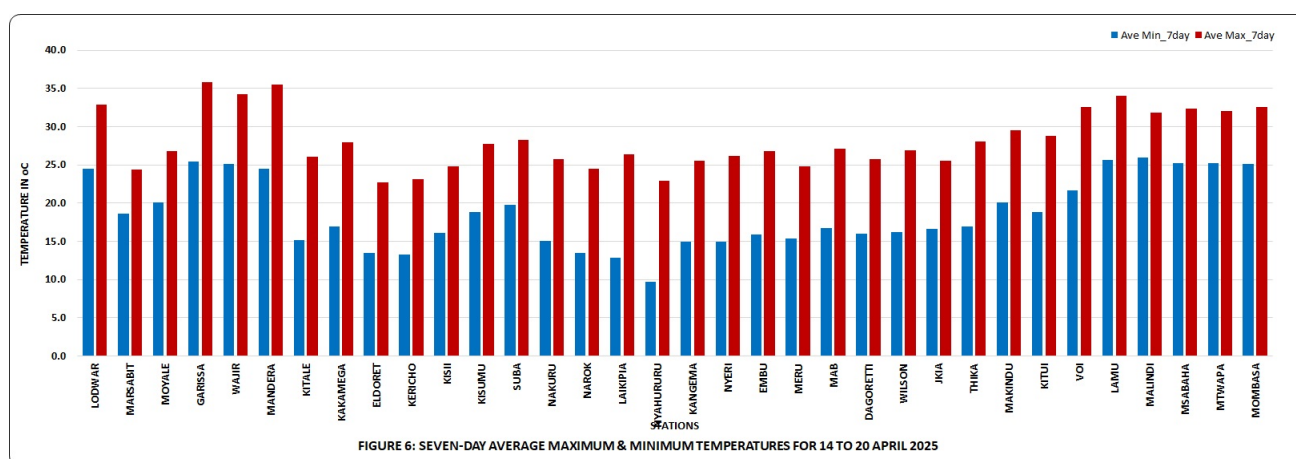
Kiateneni Rainfall Station in Kitui County recorded the highest amount of rainfall within 24-hours: 124.6mm on 19 April 2025.



2.2 Temperature Review

Comparing the 7 to 13 April 2025 and the 14 to 20 April 2025 periods, it is noted that day-time (maximum) temperatures decreased over a number of stations such as Lodwar, Marsabit and Mandera but increased over others such as Machakos, Kakamega and Thika. Night-time (minimum) temperatures also increased over some stations including Kakamega, Laikipia and Meru and decreased over Lamu, Garissa and Lodwar among others.

Mandera Meteorological Station recorded the highest daily maximum temperature: 38.0°C on 15 April 2025 while Nyahururu Meteorological Station recorded the lowest daily minimum temperature: 7.1°C on 17 April 2025. The same stations recorded the highest seven-day average maximum temperature and the lowest seven-day average minimum temperature: 35.8°C and 9.7°C respectively (see Figure 6).



N.B: This forecast should be used in conjunction with the daily (24-hour) and five-day forecasts issued by this Department. County specific forecasts are available from the offices of respective County Directors of Meteorological Services.

KEY OF SCIENTIFIC WORDS USED

| 24-hour rainfall categories | |
|-----------------------------|------------|
| Range | Category |
| <5mm | Light |
| 5-20mm | Moderate |
| 20-50mm | Heavy |
| >50mm | Very heavy |

| Rainfall coverage | |
|-------------------|----------------------|
| Term | Meaning |
| Most places | Between 66% and 100% |
| Several places | Between 33% and 66% |
| Few places | Less than 33% |

Dr. David Gikungu

DIRECTOR OF METEOROLOGICAL SERVICES