



KENYA
METEOROLOGICAL
DEPARTMENT

For further info:

Contact: Daniel M. Mbithi

Mobile No. 0715255171

Email: mbithi_d@yahoo.com

County Director of Meteorological Services Kitui County

Weekly Weather forecast for Kitui County

1.1 PART I: WEEKLY FORECAST FOR THE PERIOD 11th to 17th March 2025 Weather forecast Table

Sub County	Ward	Probable Total weekly amount (mm)	Probable weather Notes: Light rains <1-5 mm; Moderate rains 5-20 mm; Heavy rains <5 mm; Very heavy rains >50 mm							Winds (km/h kilometers per hour)	Temp (Tmax °C & Tmin °C)
			Tue	Wed	Thur	Fri	Sat	Sun	Mon	Weekly	Weekly
Mwingi West	Nguutani	>10mm	Light rain	Light rain	Light rain	No rain	No rain	No rain	Light rain	Easterly 18.0 km/h	Max 26-31 °C Min 18-20 °C
	Kyome/Thaana	>10mm	Moderate rain	Light rain	Light rain	No rain	No rain	No rain	Light rain	Easterly 18.0 km/h	
	Kiomo/Kyethani	>10mm	Moderate rain	Light rain	Light rain	No rain	No rain	No rain	Moderate rain	Easterly 18.0 km/h	
	Migwani	>10mm	Moderate rain	Light rain	Light rain	No rain	No rain	No rain	Light rain	Easterly 18.0 km/h	
Mwingi North	Ngomeni	>10mm	Light rain	Light rain	Light rain	No rain	Light rain	Light rain	Light rain	Easterly 14.4 km/h	Max 28-35 °C Min 20-23 °C
	Kyuso	>10mm	Light rain	Light rain	Light rain	No rain	Light rain	Light rain	Light rain	Easterly 18.0 km/h	
	Tseikuru	>10mm	Light rain	Light rain	No rain	No rain	Light rain	Light rain	Light rain	Easterly 18.0 km/h	
	Tharaka	>10mm	Moderate	Light rain	No rain	No rain	Light rain	Light rain	Light rain	Easterly 14.4 km/h	

Sub County	Ward	Probable Total weekly amount (mm)	Probable weather Notes: Light rains <1-5 mm; Moderate rains 5-20 mm; Heavy rains <5 mm; Very heavy rains >50 mm							Winds (km/h kilometers per hour)	Temp (Tmax °C & Tmin °C)
			Tue	Wed	Thur	Fri	Sat	Sun	Mon	Weekly	Weekly
			<i>rain</i>								
	Mumoni	>10mm	<i>Light rain</i>	<i>Light rain</i>	<i>Light rain</i>	<i>No rain</i>	<i>Light rain</i>	<i>Light rain</i>	<i>Light rain</i>	Easterly 18.0 km/h	
Mwingi Central	Central	>10mm	<i>Moderate rain</i>	<i>Light rain</i>	<i>Light rain</i>	<i>No rain</i>	<i>Light rain</i>	<i>Moderate rain</i>	<i>Light rain</i>	Easterly 18.0 km/h	Max 27-34 °C Min 19-22 °C
	Kivou	>10mm	<i>Moderate rain</i>	<i>Light rain</i>	<i>Light rain</i>	<i>No rain</i>	<i>Light rain</i>	<i>Moderate rain</i>	<i>Light rain</i>	Easterly 18.0 km/h	
	Mui	>10mm	<i>Light rain</i>	<i>Light rain</i>	<i>Light rain</i>	<i>No rain</i>	<i>Light rain</i>	<i>Moderate rain</i>	<i>Light rain</i>	Easterly 18.0 km/h	
	Waita	>10mm	<i>Light rain</i>	<i>Light rain</i>	<i>Light rain</i>	<i>No rain</i>	<i>Light rain</i>	<i>Moderate rain</i>	<i>Light rain</i>	Easterly 18.0 km/h	
	Nuu	>10mm	<i>Moderate rain</i>	<i>Light rain</i>	<i>Light rain</i>	<i>No rain</i>	<i>Light rain</i>	<i>Light rain</i>	<i>Moderate rain</i>	Easterly 14.4 km/h	
	Nguni	>10mm	<i>Moderate rain</i>	<i>Light rain</i>	<i>Light rain</i>	<i>No rain</i>	<i>Light rain</i>	<i>Light rain</i>	<i>Light rain</i>	Easterly 14.4 km/h	
Kitui South	Ikanga/Kyatune	>20mm	<i>Light rain</i>	<i>Light rain</i>	<i>No rain</i>	<i>No rain</i>	<i>No rain</i>	<i>No rain</i>	<i>Moderate rain</i>	Easterly 18.0 km/h	Max 28-34 °C Min 19-22 °C
	Mutomo/Kibwea	>20mm	<i>Light rain</i>	<i>Light rain</i>	<i>No rain</i>	<i>No rain</i>	<i>No rain</i>	<i>No rain</i>	<i>Moderate rain</i>	Easterly 18.0 km/h	
	Kanziko/Simisi	>20mm	<i>Light rain</i>	<i>Light rain</i>	<i>No rain</i>	<i>No rain</i>	<i>No rain</i>	<i>No rain</i>	<i>Moderate rain</i>	Easterly 18.0 km/h	
	Mutha	>20mm	<i>Moderate rain</i>	<i>Light rain</i>	<i>No rain</i>	<i>No rain</i>	<i>No rain</i>	<i>No rain</i>	<i>Moderate rain</i>	Easterly 18.0 km/h	
	Ikutha	>20mm	<i>Light rain</i>	<i>Light rain</i>	<i>No rain</i>	<i>No rain</i>	<i>No rain</i>	<i>No rain</i>	<i>Moderate rain</i>	Easterly 18.0 km/h	
	Athi	>20mm	<i>Light rain</i>	<i>Light rain</i>	<i>No rain</i>	<i>No rain</i>	<i>No rain</i>	<i>No rain</i>	<i>Moderate rain</i>	Easterly 18.0 km/h	

Sub County	Ward	Probable Total weekly amount (mm)	Probable weather Notes: Light rains <1-5 mm; Moderate rains 5-20 mm; Heavy rains <5 mm; Very heavy rains >50 mm							Winds (km/h kilometers per hour)	Temp (Tmax °C & Tmin °C)
			Tue	Wed	Thur	Fri	Sat	Sun	Mon	Weekly	Weekly
Kitui East	Chuluni	>10mm	Moderate rain	Light rain	No rain	No rain	No rain	No rain	Moderate rain	Easterly 18.0 km/h	Max 27-34 °C Min 19-22 °C
	Nzambani	>10mm	Moderate rain	Light rain	No rain	No rain	No rain	No rain	Moderate rain	Easterly 18.0 km/h	
	Mutito/Kaliku	>10mm	Light rain	Light rain	No rain	No rain	No rain	No rain	Moderate rain	Easterly 14.4 km/h	
	Zombe/Mwitika	>10mm	Light rain	Light rain	No rain	No rain	No rain	No rain	Moderate rain	Easterly 14.4 km/h	
	Voo/Kyamatu	>10mm	Moderate rain	Light rain	No rain	No rain	No rain	No rain	Moderate rain	Easterly 14.4 km/h	
	Endau/Malalani	>10mm	Moderate rain	Light rain	No rain	No rain	No rain	No rain	Moderate rain	Easterly 14.4 km/h	
Kitui Rural	Mbitini	>20mm	Moderate rain	Light rain	No rain	No rain	No rain	Light rain	Moderate rain	Easterly 18.0 km/h	Max 27-32 °C Min 17-21 °C
	Kisasi	>20mm	Moderate rain	Light rain	No rain	No rain	No rain	Light rain	Moderate rain	Easterly 18.0 km/h	
	Kyangi	>20mm	Moderate rain	Light rain	No rain	No rain	No rain	Light rain	Moderate rain	Easterly 18.0 km/h	
	Yatta/Kwa Vonza	>20mm	Moderate rain	Moderate rain	No rain	No rain	No rain	Moderate rain	Moderate rain	Easterly 18.0 km/h	
Kitui West	Kauwi	>10mm	Light rain	Light rain	Light rain	No rain	No rain	No rain	Light rain	Easterly 18.0 km/h	Max 25-32 °C Min 17-19 °C
	Mutonguni	>10mm	Light rain	Light rain	Light rain	No rain	No rain	No rain	Light rain	Easterly 18.0 km/h	
	Matinyani	>10mm	Light rain	Light rain	Light rain	No rain	No rain	No rain	Light rain	Easterly 18.0 km/h	
	Kwa Mutonga/Kithumula	>10mm	Light rain	Light rain	Light rain	No rain	No rain	No rain	Light rain	Easterly 18.0 km/h	
Kitui	Kyangwithya East	>10mm	Light rain	Light rain	Light rain	No rain	No rain	No rain	Moderate	Easterly 18.0	Max 26-33 °C

Sub County	Ward	Probable Total weekly amount (mm)	Probable weather Notes: Light rains <1-5 mm; Moderate rains 5-20 mm; Heavy rains <5 mm; Very heavy rains >50 mm							Winds (km/h kilometers per hour)	Temp (Tmax °C & Tmin °C)
			Tue	Wed	Thur	Fri	Sat	Sun	Mon	Weekly	Weekly
Central									<i>rain</i>	km/h	Min 18-22 °C
	Kyangwithya West	>10mm	<i>Light rain</i>	<i>Light rain</i>	<i>Light rain</i>	<i>No rain</i>	<i>No rain</i>	<i>No rain</i>	<i>Moderate rain</i>	Easterly 18.0 km/h	
	Township	>10mm	<i>Light rain</i>	<i>Light rain</i>	<i>Light rain</i>	<i>No rain</i>	<i>No rain</i>	<i>No rain</i>	<i>Moderate rain</i>	Easterly 18.0 km/h	
	Mulango	>10mm	<i>Light rain</i>	<i>Light rain</i>	<i>Light rain</i>	<i>No rain</i>	<i>No rain</i>	<i>No rain</i>	<i>Moderate rain</i>	Easterly 18.0 km/h	
	Miambani	>10mm	<i>Light rain</i>	<i>Light rain</i>	<i>Light rain</i>	<i>No rain</i>	<i>No rain</i>	<i>No rain</i>	<i>Light rain</i>	Easterly 14.4 km/h	

1.2 Review for February 2025

Mainly sunny, and dry weather conditions prevailed over most parts of the County during the month of February. Temperatures were warmer than average over most parts of the County with some stations over Mwingi North and Kitui East Sub-counties recording high daytime temperatures of up to 37°C and nighttime temperatures of 24°C.

1.3 Outlook for March 2025

The rainfall outlook for March 2025 is mainly based on empirical statistical models developed from the expected evolution of global Sea Surface Temperature (SST) anomalies and the Southern Oscillation Index (SOI). Currently, the Indian Ocean Dipole (IOD) is neutral and weak La Niña conditions are still present. The forecast indicates that most parts of the County will experience near to above normal rainfall during the month. Temperatures are also likely to be above average over the entire County.

1.4 PART II: FURTHER ADVISORIES

SUMMARY ABOUT THE WEEKLY FORECAST:

Morning rains as well as afternoon and night showers and thunderstorms are expected over several places during the first and the last days of the forecast period. Maximum temperatures are expected to range from 25°C - 35°C, while minimum temperatures are expected to range from 17°C - 23°C. Strong North easterly to Easterly winds with speeds exceeding 12.5 knots (6.5 m/s) are expected in most parts of the County. *Community members advised to inculcate the culture of being “weather – ready”, “climate – smart” and “water – wise” as we navigate the unfamiliar and chaotic environment of a changing climate. This will help them adapt to a changing climate while at the same time mitigating the adverse effects of Climate Change and Variability, hence becoming more resilient to the vagaries of Climate Change.* In light of this weather forecast, farmers are also advised to consult with respective local extension officers from the County Ministry of Agriculture and Livestock at ward level for more advice on the best farm practices.

Note: 1 mm of rainfall is equivalent to 1 litre of rainfall per square meter.

KEY OF SCIENTIFIC WORDS USED

Rainfall categories	
Range	Category
<5 mm	Light
5 - 20mm	Moderate
20 - 50mm	Heavy
>50mm	Very heavy
Rainfall coverage	
Term	Meaning
Most Places	Between 66% and 100%
Several Places	Between 33% and 66%
Few Places	Below 33%
Ushauri wa Idara ya Utabiri wa Hali ya Hewa: Wakulima wanashauriwa wamalize kuvuna chakula chao wiki hii na kukianika vizuri kwa jua hili kuepukana na athari za sumu kuvu yaani 'aflatoxin. Wakulima pia, wanaweza kutumia wakati huu wa upepo wa hali ya juu kupura na kupepeti chakula chao.	

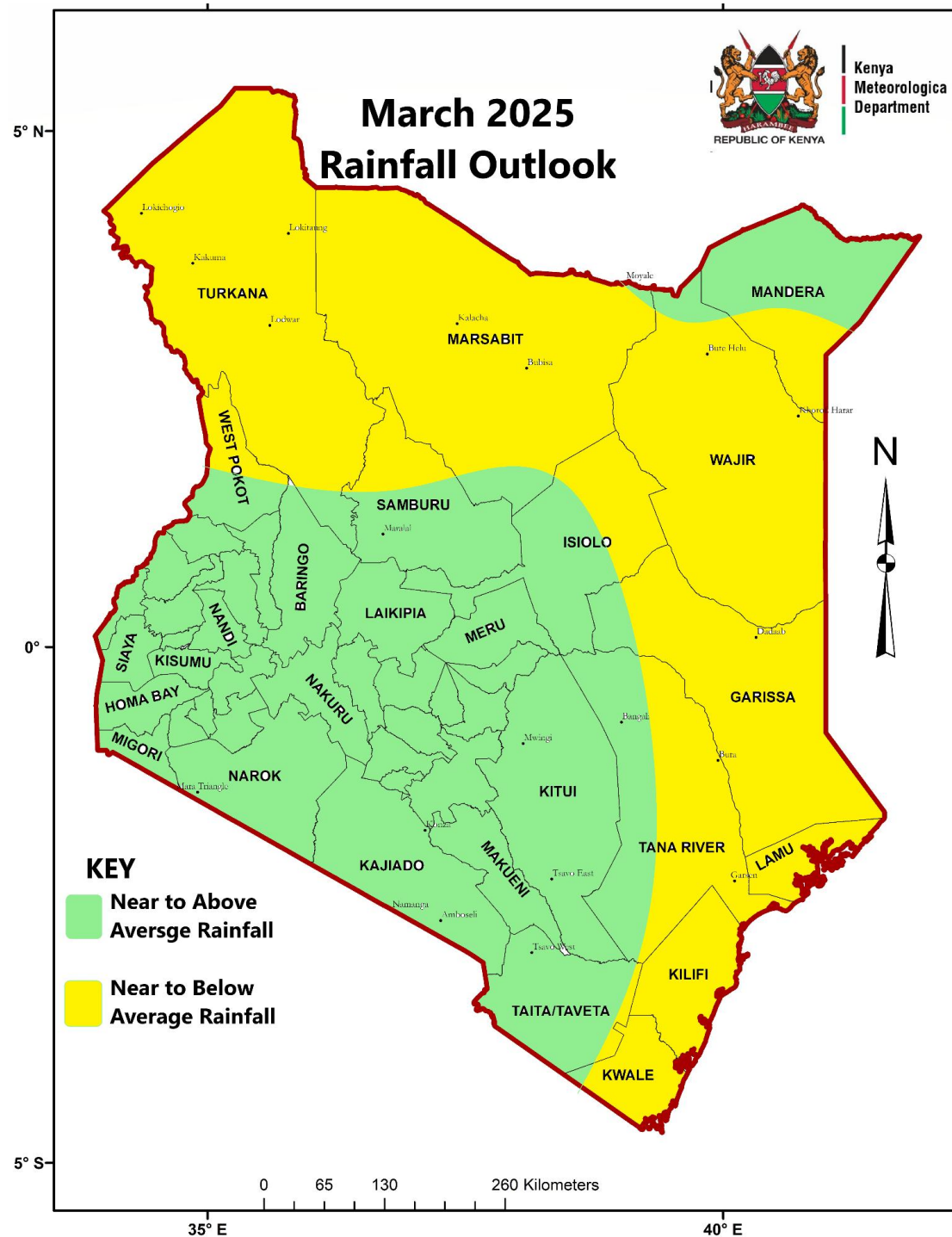
For further information, please contact:



Daniel M. Mbithi
County Director of Meteorological Services
Mobile: 0715255171
Email: mbithi_d@yahoo.com

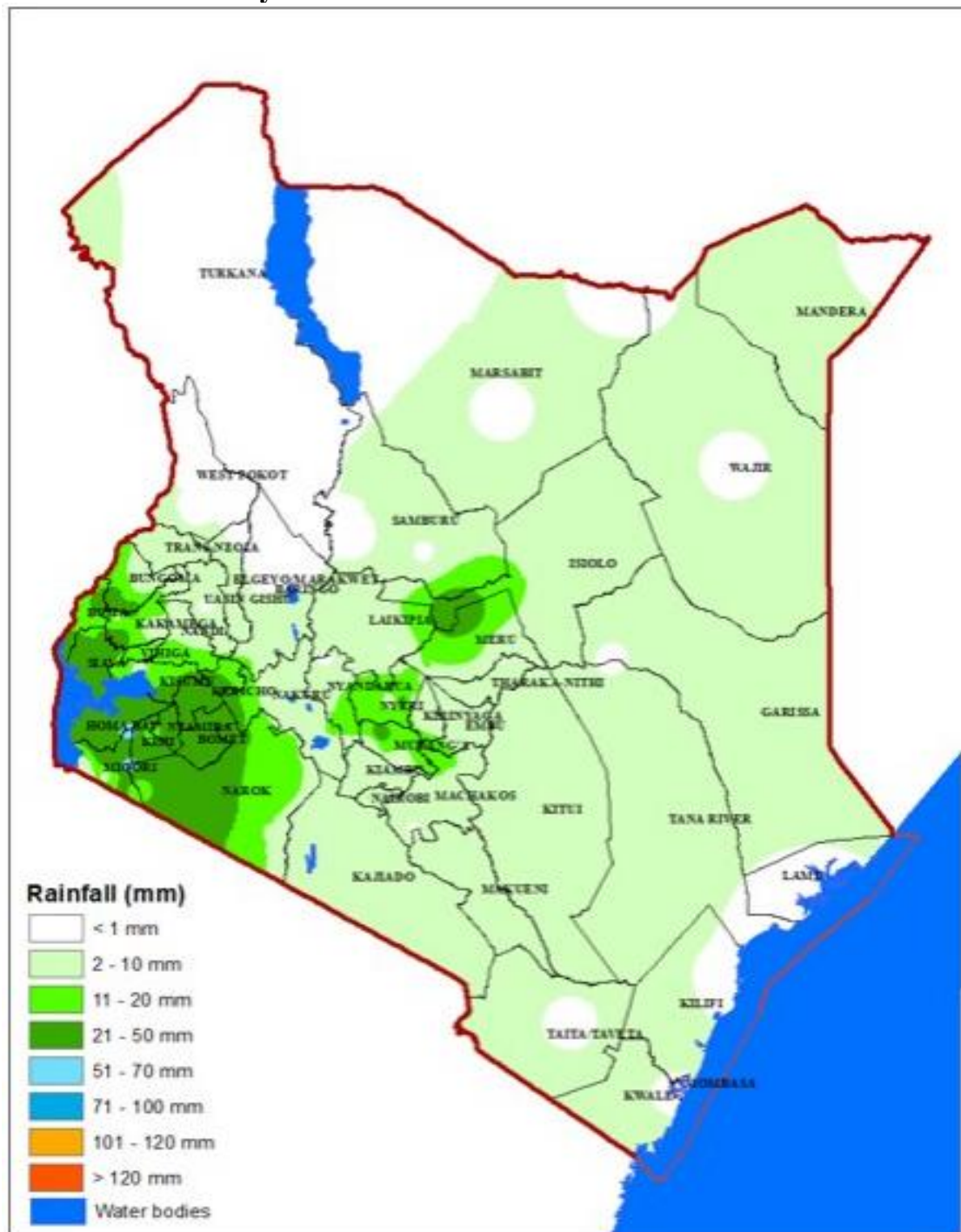
You can find more information about the climate and weather in Kenya on the KMD website <http://www.meteo.go.ke/>

Annex I: Rainfall forecast for the month of March 2025



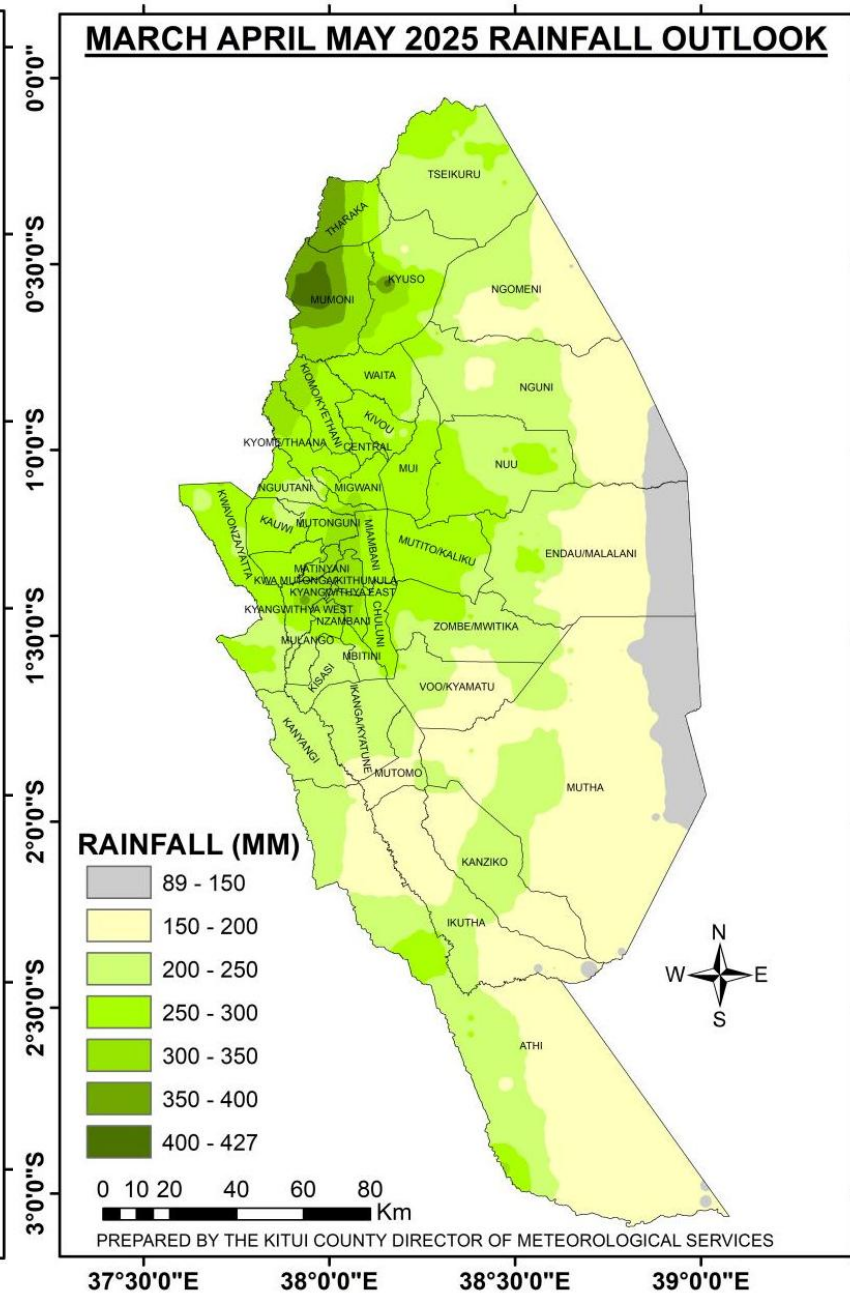
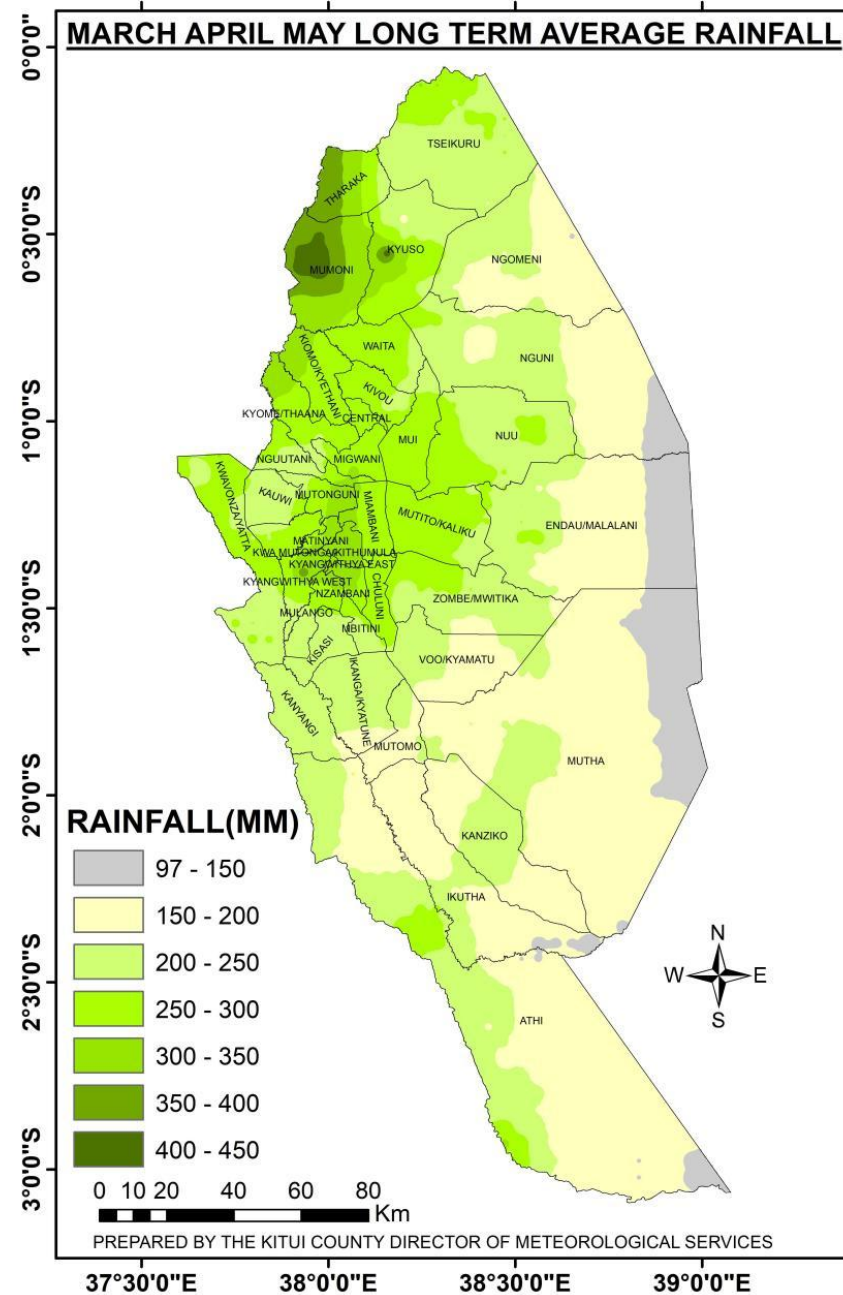
NB: Near to above normal rainfall expected over most places during the month of March 2025 in the County

Annex II: February 2025 Rainfall Performance



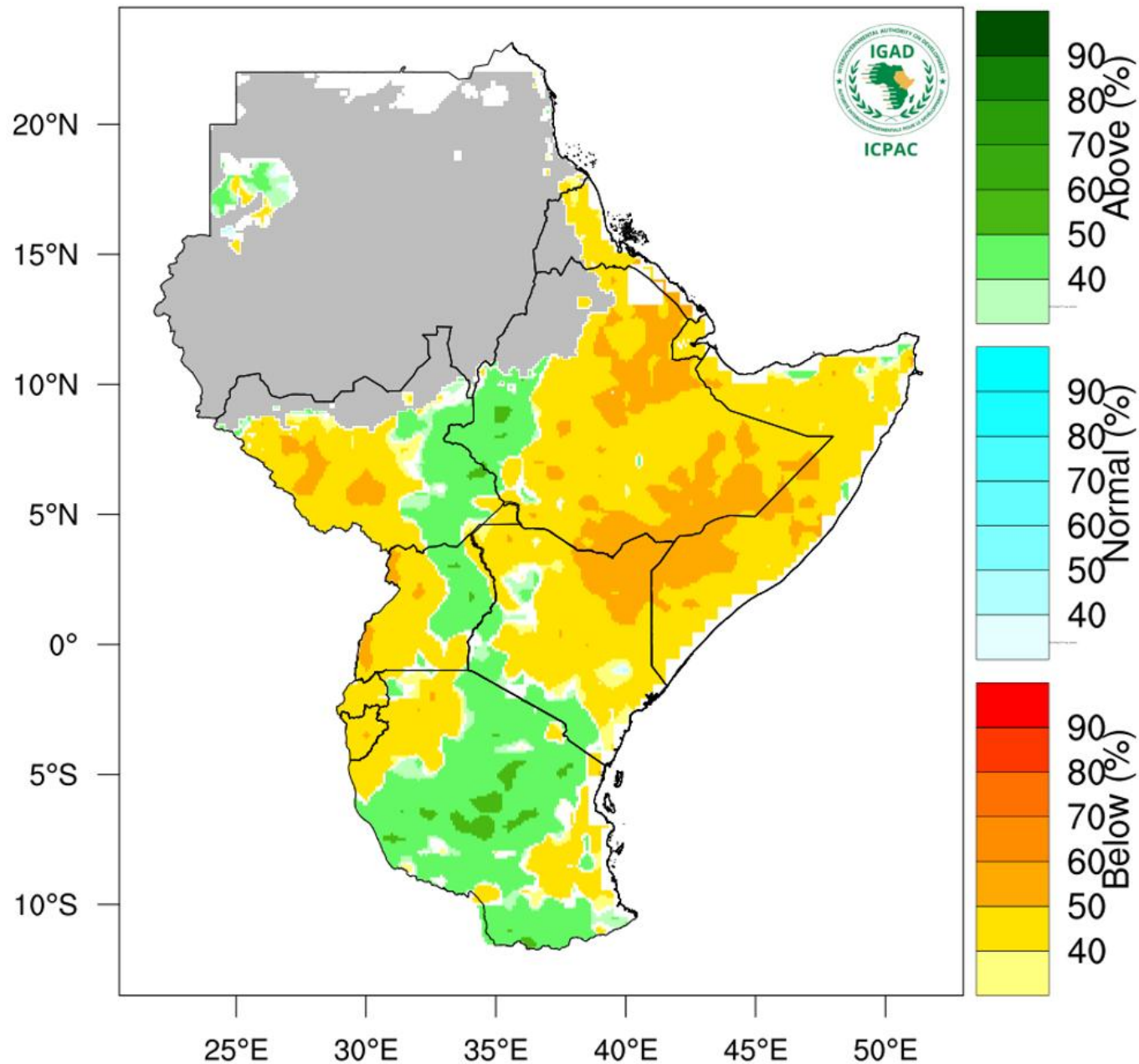
NB: Total amount of rainfall recorded in the month of February 2025: *Below Normal*

Annex III: Rainfall Climatology versus Rainfall Forecast for the months of March to May (MAM) 2025



NB: The expected rainfall amounts in the county are likely to be normal to below the long-term average for the season. Onset is expected during the 2nd to 3rd week of March.

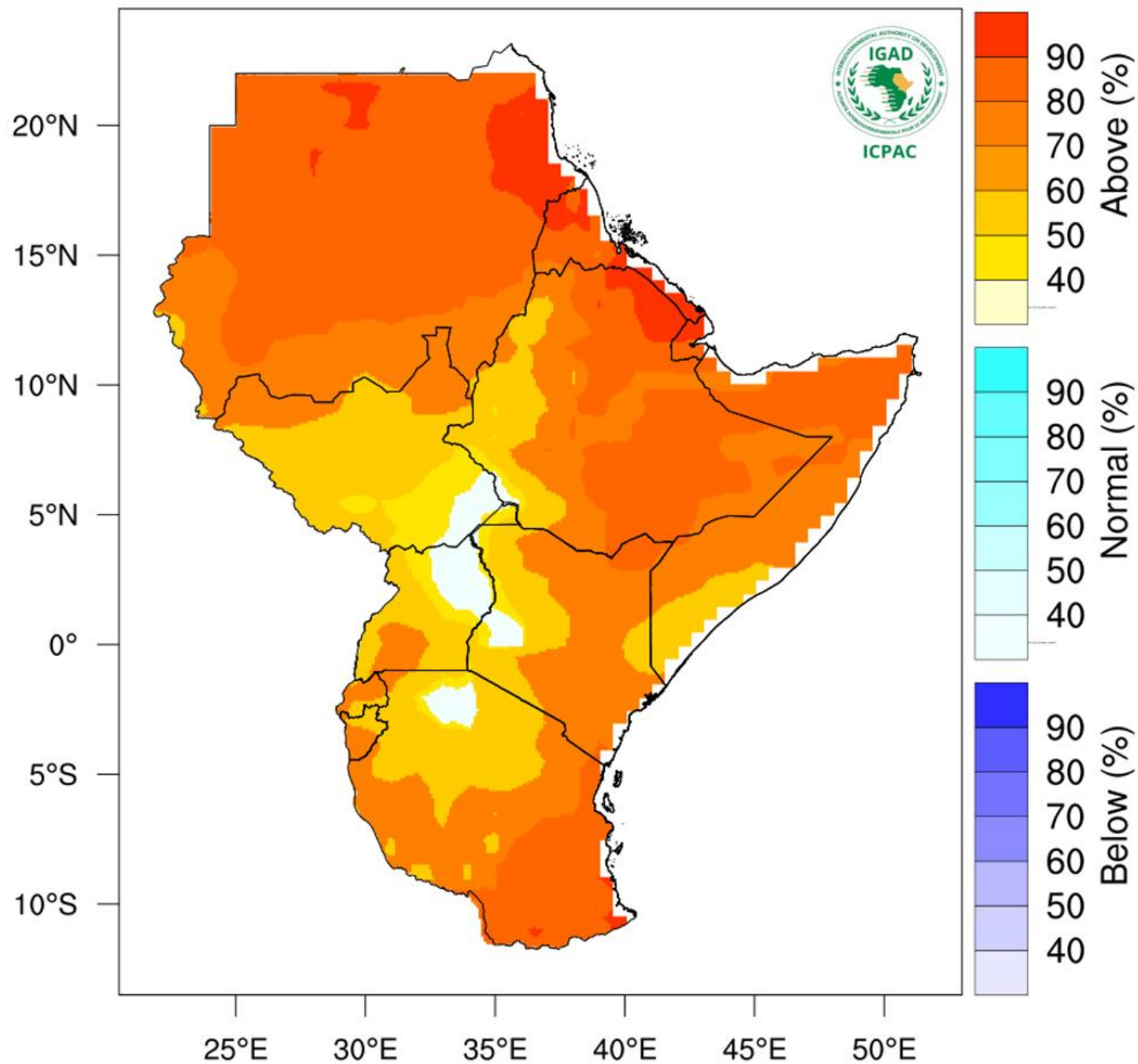
Rainfall Probabilistic Forecast for Mar-May 2025



NB: Near to below normal conditions expected over most parts of the County between March and May 2025

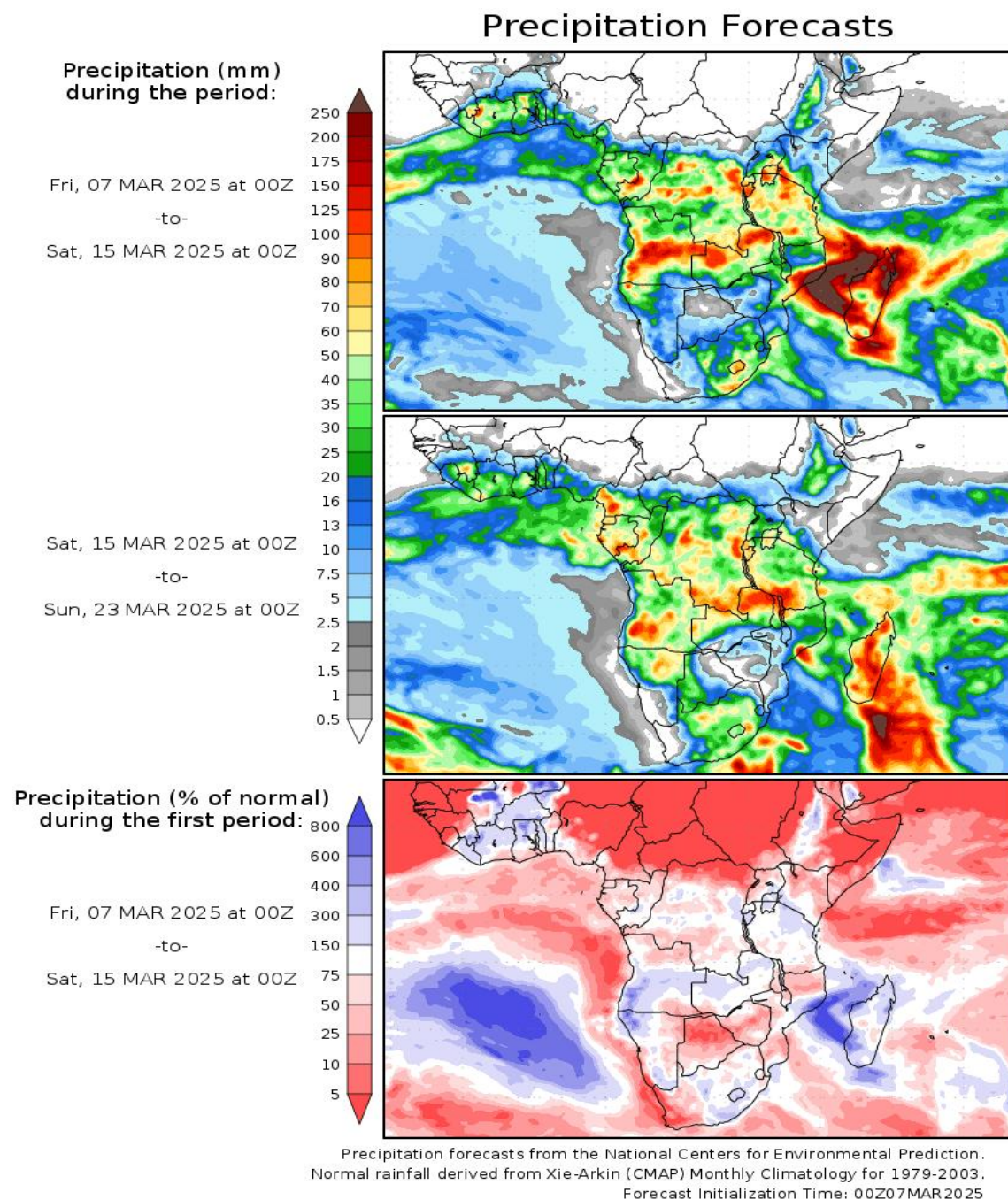
Annex VI: Temperature forecast for the months of March to May

Temperature Forecast for Mar-May 2025



NB: Warmer than usual conditions indicated over most parts of Kitui County between March and May 2025

Annex VII: Rainfall forecast for 7th to 23rd March, 2025



NB: Below normal conditions expected over most parts of the County between 7th to 23rd March, 2025