



MINISTRY OF ENVIRONMENT, CLIMATE CHANGE AND FORESTRY

STATE DEPARTMENT FOR ENVIRONMENT AND CLIMATE CHANGE

KENYA METEOROLOGICAL DEPARTMENT

Our Ref: MET/7/300

Date: 3 March 2024

SEVEN-DAY WEATHER FORECAST FOR 4 TO 10 MARCH 2025

SUMMARY

Forecast for 4 to 10 March 2025

- Mainly sunny, dry, and hot weather conditions are expected to prevail over most parts of the country. However occasional rainfall is likely, towards the end of the forecast period in some parts of the Highlands West and East of the Rift Valley, Lake Victoria Basin, Central and South Rift Valley, the Coastal Region, the South-eastern Lowlands, and isolated areas in Northeast and Northwest.
- Maximum temperatures are expected to be high (above 30°C) in several parts of the country.
- Minimum temperatures will drop below 10°C in some parts of the Highlands East of the Rift Valley, Central and South Rift Valley, and around Mount Kilimanjaro.
- Strong south-easterly winds exceeding 25 knots (12.9 m/s) are expected over parts of the Northeast and Northwest.

Weather Review for 24 February to 2 March 2025

- Dry weather conditions were experienced over most parts of the country. Kakamega, Narok and Nyeri were the only counties where some stations recorded rainfall above 1 mm.
- Daytime (maximum) temperatures increased over most stations except over Kitale and Lodwar where temperatures decreased.
- Night-time (minimum) temperatures also increased over most stations except over Ngong, Makindu, Msabaha and Mtwapa where lower temperatures were recorded.

1 FORECAST FOR 4 TO 10 MARCH 2025

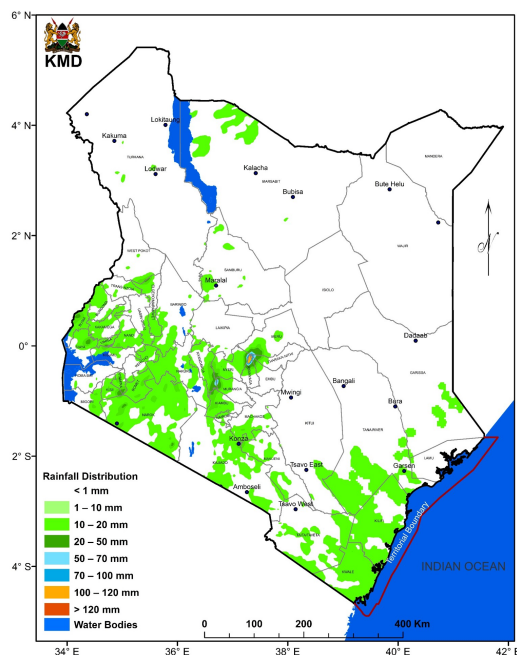


FIG 1: FORECASTED SEVEN DAY TOTAL RAINFALL FOR 4 TO 10 MARCH 2025

Mainly sunny, dry, and hot weather conditions are expected to prevail over most parts of the country. However occasional rainfall is likely, towards the end of the forecast period in some parts of the Highlands West and East of the Rift Valley, Lake Victoria Basin, Central and South Rift Valley, the Coastal Region, the South-eastern Lowlands, and isolated areas in Northeast and Northwest, as shown in **Figure 1**.

Average daytime (maximum) temperatures of more than 30°C will be experienced over several parts of the country, except over the Highlands East of the Rift Valley, Central Rift Valley and parts of South Rift Valley, South-eastern lowlands and the Lake Victoria Basin where temperature is likely to be below 30°C, as shown in **Figure 2**.

around Mount Kilimanjaro, as shown in **Figure 3**.

Average night-time (minimum) temperatures will be less than 10°C in some parts of the Highlands East of the Rift Valley, Central and South Rift Valley and

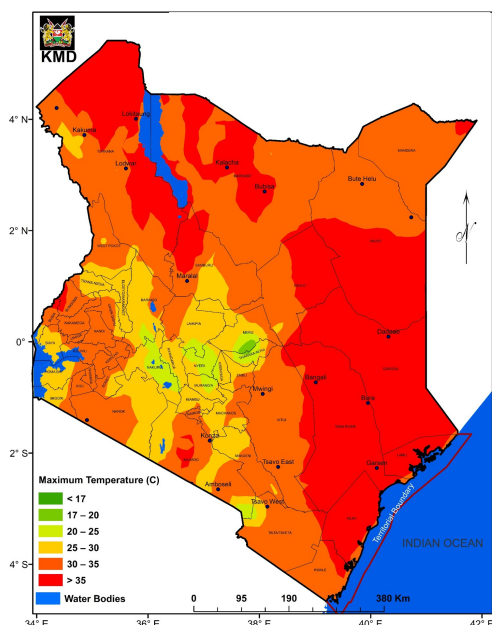


FIG 2: FORECASTED AVERAGE MAXIMUM TEMPERATURE FOR 4 TO 10 MARCH 2025

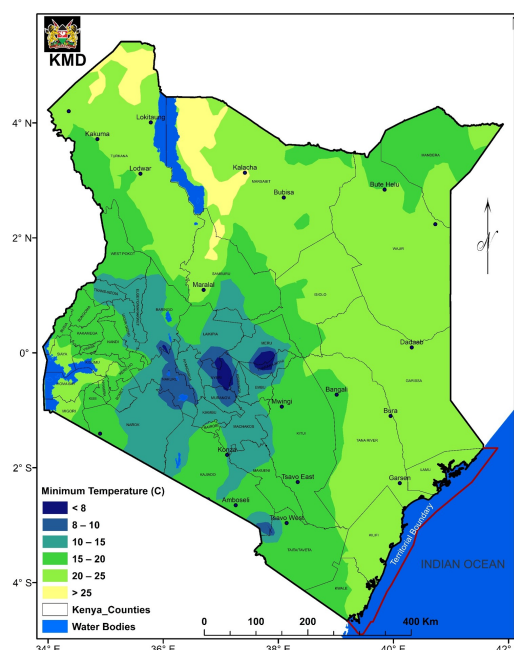


FIG 3: FORECASTED AVERAGE MINIMUM TEMPERATURE FOR 4 TO 10 MARCH 2025

1.1 DETAILED REGIONAL RAINFALL FORECAST FOR 4 TO 10 MARCH 2025

1.1.1 The Lake Victoria Basin, the Central and South Rift Valley and parts of the Highlands West of the Rift Valley (*Nandi, Kakamega, Vihiga, Bungoma, Siaya, Busia, Nakuru, Trans-Nzoia, Kisii, Nyamira, Kericho, Bomet, Kisumu, Homabay, Migori and Narok Counties*):

Mainly sunny intervals are expected to prevail during the day. However, a few to several areas are likely to experience morning rains and afternoon showers and thunderstorms towards the end of the forecast period. Nights are expected to be partly cloudy, though a few areas may experience showers towards during the same period.

1.1.2 The North Rift Valley and parts of the Highlands West of the Rift Valley (*Uasin-Gishu, Elgeyo-Marakwet, Baringo and West-Pokot Counties*)

Days are expected to be mainly sunny with scattered clouds, while nights are likely to be partly cloudy. However, occasional rainfall is likely towards the end of the forecast period.

1.1.3 North-western Kenya (*Turkana and Samburu Counties*):

Mainly sunny conditions are expected during the day while nights are expected to be clear, though some nights may have partly cloudy conditions. However, a few areas may experience morning rains and afternoon showers towards the end of the forecast period. Strong south-easterly winds of more than 25 Knots (12.9 m/s) are expected in parts of Turkana County.

1.1.4 The Highlands East of the Rift Valley (including Nairobi County) (*Nyandarua, Nyeri, Laikipia, Kirinyaga, Murang'a, Kiambu, Meru, Embu, Tharaka-Nithi and Nairobi Counties*):

Mainly sunny intervals are expected to prevail during the day. However, a few areas are likely to receive morning rains and afternoon showers towards the end of the forecast

period. Nights are expected to be partly cloudy, though a few areas may experience showers towards the end of the forecast period.

1.1.5 North-eastern Kenya (*Marsabit, Mandera, Wajir, Garissa and Isiolo Counties*):

Sunny intervals are expected during the day while nights are likely to be partly cloudy. Occasional morning rains and afternoon showers are however likely over few areas towards the end of the forecast period. Strong south-easterly winds of more than 25 Knots (12.9 m/s) are expected in parts of Marsabit County.

1.1.6 The South-eastern lowlands (*Machakos, Kitui, Makueni, Kajiado and Taita-Taveta Counties as well as the inland parts of Tana-River County*):

Mainly sunny intervals are expected to prevail during the day. However, a few areas are likely to experience morning rains and afternoon showers towards the end of the forecast period. Nights are expected to be partly cloudy though a few areas may receive showers during the same period.

1.1.7 The Coast (*Mombasa, Kilifi, Lamu and Kwale Counties as well as the coastal parts of Tana-River County*):

Mainly sunny intervals are expected to persist during the day while nights are expected to be partly cloudy. However, a few areas may experience morning, afternoon and night showers towards the end of the forecast period.

1.2 DETAILED TEMPERATURE FORECAST FOR 4 TO 10 MARCH 2025

Expected maximum and minimum temperatures for selected towns and cities are shown in **Table 1**.

CITY/TOWN	MAX (°C)	MIN (°C)	CITY/TOWN	MAX (°C)	MIN (°C)	CITY/TOWN	MAX (°C)	MIN (°C)
LODWAR	38.0	22.0	KISUMU	33.0	18.0	THIKA	30.0	15.0
MARSABIT	31.0	18.0	SUBA	33.0	22.0	NGONG	28.0	13.0
MOYALE	33.0	19.0	NAKURU	29.0	13.0	MACHAKOS	28.0	14.0
GARISSA	37.0	24.0	NAROK	29.0	13.0	MAKINDU	33.0	17.0
WAJIR	38.0	24.0	LAIKIPIA	30.0	13.0	KITUI	32.0	18.0
MANDERA	38.0	24.0	NYAHURURU	25.0	07.0	VOI	35.0	20.0
KITALE	29.0	12.0	KANGEMA	28.0	13.0	LAMU	33.0	25.0
KAKAMEGA	32.0	16.0	NYERI	27.0	13.0	MALINDI	33.0	23.0
ELDORET	27.0	11.0	EMBU	29.0	15.0	MSABAHA	32.0	25.0
KERICHO	27.0	12.0	MERU	28.0	15.0	MTWAPA	33.0	25.0
KISII	29.0	14.0	NAIROBI	30.0	15.0	MOMBASA	35.0	24.0

2 WEATHER REVIEW FOR 24 FEBRUARY TO 2 MARCH 2025

2.1.1 Rainfall Review

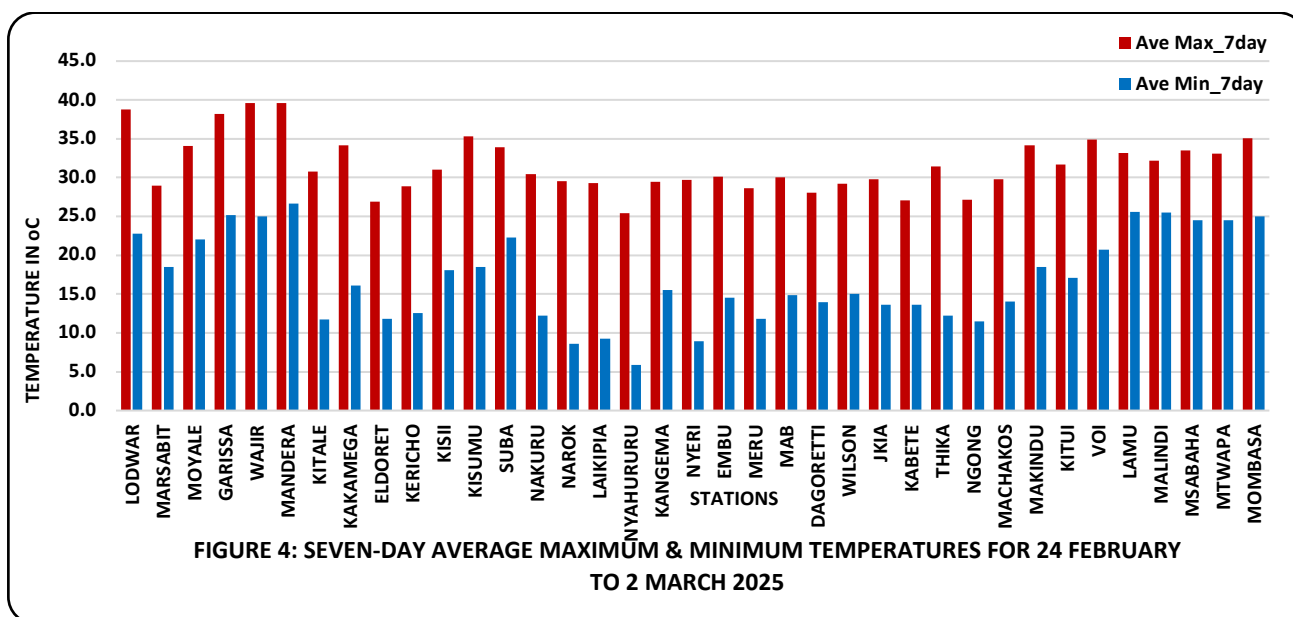
Dry weather conditions were experienced over most parts of the country. Kakamega, Narok, Hombé and Nyeri are the only stations that recorded above 1 mm with 3.2, 2.0, 2.0 and 1.4 mm respectively. Machakos, Ragati and Moi Air Base reported less than 1 mm.

Comparing the 17 to 23 February 2025 and 24 February to 2 March 2025 periods, it is noted that rainfall amounts increased slightly over the areas that received rainfall.

The highest seven-day rainfall total (3.2 mm) was recorded at Kakamega Meteorological station. The same station recorded the highest amount of rainfall within 24-hours: 3.2 mm on 1 March 2025.

2.2 Temperature Review

Comparing the 17 to 23 February 2025 and 24 February to 2 March 2025 periods, it is noted that daytime (maximum) temperatures increased over most stations except over Kitale and Lodwar where temperatures decreased. Night-time (minimum) temperatures also increased over most stations except over Ngong, Makindu, Msabaha and Mtwapa where temperature decreased. Wajir Meteorological Station recorded the highest daily maximum temperature: 40.5°C on 27 February 2025 while Nyahururu Meteorological Station recorded the lowest daily minimum temperature: 5.0°C on 28 February 2025. Mandera and Wajir stations recorded the highest seven-day average maximum temperature 39.6 °C while Nyahururu recorded the lowest seven-day average minimum temperature: 5.9°C and 5.1°C (see **Figure 4**).



N.B: This forecast should be used in conjunction with the daily (24-hour) and five-day forecasts issued by this Department. County specific forecasts are available from the offices of respective County Directors of Meteorological Services.

KEY OF SCIENTIFIC WORDS USED

<i>24-hour rainfall categories</i>	
<i>Range</i>	<i>Category</i>
<5mm	Light
5-20mm	Moderate
20-50mm	Heavy
>50mm	Very heavy

<i>Rainfall coverage</i>	
<i>Term</i>	<i>Meaning</i>
Most places	Between 66% and 100%
Several places	Between 33% and 66%
Few places	Less than 33%



Dr. David Gikungu

DIRECTOR OF METEOROLOGICAL SERVICES