



KENYA
METEOROLOGICAL
DEPARTMENT

For further info:

Contact: Daniel M. Mbithi

Mobile No. 0715255171

Email: mbithi_d@yahoo.com

County Director of Meteorological Services Kitui County

Weekly Weather forecast for Kitui County

1.1 PART I: WEEKLY FORECAST FOR THE PERIOD 18th to 24th February 2025 Weather forecast Table

Sub County	Ward	Probable Total weekly amount (mm)	Probable weather Notes: Light rains <1-5 mm; Moderate rains 5-20 mm; Heavy rains <5 mm; Very heavy rains >50 mm							Winds (km/h kilometers per hour)	Temp (Tmax °C & Tmin °C)
			Tue	Wed	Thur	Fri	Sat	Sun	Mon	Weekly	Weekly
Mwingi West	Nguutani	0.0mm	No rain	No rain	No rain	No rain	No rain	No rain	No rain	Easterly 21.6 km/h	Max 30-34 °C Min 16-21 °C
	Kyome/Thaana	0.0mm	No rain	No rain	No rain	No rain	No rain	No rain	No rain	Easterly 25.2 km/h	
	Kiomo/Kyethani	0.0mm	No rain	No rain	No rain	No rain	No rain	No rain	No rain	Easterly 25.2 km/h	
	Migwani	0.0mm	No rain	No rain	No rain	No rain	No rain	No rain	No rain	Easterly 25.2 km/h	
Mwingi North	Ngomeni	0.0mm	No rain	No rain	No rain	No rain	No rain	No rain	No rain	Easterly 21.6 km/h	Max 32-37 °C Min 19-23 °C
	Kyuso	0.0mm	No rain	No rain	No rain	No rain	No rain	No rain	No rain	Easterly 21.6 km/h	
	Tseikuru	0.0mm	No rain	No rain	No rain	No rain	No rain	No rain	No rain	Easterly 18.8 km/h	
	Tharaka	0.0mm	No rain	No rain	No rain	No rain	No rain	No rain	No rain	Easterly 18.8 km/h	
	Mumoni	0.0mm	No rain	No rain	No rain	No rain	No rain	No rain	No rain	Easterly 21.6 km/h	

Sub County	Ward	Probable Total weekly amount (mm)	Probable weather Notes: Light rains <1-5 mm; Moderate rains 5-20 mm; Heavy rains <5 mm; Very heavy rains >50 mm							Winds (km/h kilometers per hour)	Temp (Tmax °C & Tmin °C)
			Tue	Wed	Thur	Fri	Sat	Sun	Mon	Weekly	Weekly
Mwingi Central	Central	0.0mm	<i>No rain</i>	<i>No rain</i>	<i>No rain</i>	<i>No rain</i>	<i>No rain</i>	<i>No rain</i>	<i>No rain</i>	Easterly 21.6 km/h	<i>Max 32-36 °C</i> <i>Min 18-22 °C</i>
	Kivou	0.0mm	<i>No rain</i>	<i>No rain</i>	<i>No rain</i>	<i>No rain</i>	<i>No rain</i>	<i>No rain</i>	<i>No rain</i>	Easterly 21.6 km/h	
	Mui	0.0mm	<i>No rain</i>	<i>No rain</i>	<i>No rain</i>	<i>No rain</i>	<i>No rain</i>	<i>No rain</i>	<i>No rain</i>	Easterly 21.6 km/h	
	Waita	0.0mm	<i>No rain</i>	<i>No rain</i>	<i>No rain</i>	<i>No rain</i>	<i>No rain</i>	<i>No rain</i>	<i>No rain</i>	Easterly 21.6 km/h	
	Nuu	0.0mm	<i>No rain</i>	<i>No rain</i>	<i>No rain</i>	<i>No rain</i>	<i>No rain</i>	<i>No rain</i>	<i>No rain</i>	Easterly 21.6 km/h	
	Nguni	0.0mm	<i>No rain</i>	<i>No rain</i>	<i>No rain</i>	<i>No rain</i>	<i>No rain</i>	<i>No rain</i>	<i>No rain</i>	Easterly 21.6 km/h	
Kitui South	Ikanga/Kyatune	0.0mm	<i>No rain</i>	<i>No rain</i>	<i>No rain</i>	<i>No rain</i>	<i>No rain</i>	<i>No rain</i>	<i>No rain</i>	Easterly 21.6 km/h	<i>Max 32-35 °C</i> <i>Min 18-20 °C</i>
	Mutomo/Kibwea	0.0mm	<i>No rain</i>	<i>No rain</i>	<i>No rain</i>	<i>No rain</i>	<i>No rain</i>	<i>No rain</i>	<i>No rain</i>	Easterly 21.6 km/h	
	Kanziko/Simisi	0.0mm	<i>No rain</i>	<i>No rain</i>	<i>No rain</i>	<i>No rain</i>	<i>No rain</i>	<i>No rain</i>	<i>No rain</i>	Easterly 18.0 km/h	
	Mutha	0.0mm	<i>No rain</i>	<i>No rain</i>	<i>No rain</i>	<i>No rain</i>	<i>No rain</i>	<i>No rain</i>	<i>No rain</i>	Easterly 21.6 km/h	
	Ikutha	0.0mm	<i>No rain</i>	<i>No rain</i>	<i>No rain</i>	<i>No rain</i>	<i>No rain</i>	<i>No rain</i>	<i>No rain</i>	Easterly 18.0 km/h	
	Athi	0.0mm	<i>No rain</i>	<i>No rain</i>	<i>No rain</i>	<i>No rain</i>	<i>No rain</i>	<i>No rain</i>	<i>No rain</i>	Easterly 18.0 km/h	
Kitui East	Chuluni	0.0mm	<i>No rain</i>	<i>No rain</i>	<i>No rain</i>	<i>No rain</i>	<i>No rain</i>	<i>No rain</i>	<i>No rain</i>	Easterly 21.6 km/h	<i>Max 31-36 °C</i> <i>Min 17-22 °C</i>
	Nzambani	0.0mm	<i>No rain</i>	<i>No rain</i>	<i>No rain</i>	<i>No rain</i>	<i>No rain</i>	<i>No rain</i>	<i>No rain</i>	Easterly 21.6 km/h	
	Mutito/Kaliku	0.0mm	<i>No rain</i>	<i>No rain</i>	<i>No rain</i>	<i>No rain</i>	<i>No rain</i>	<i>No rain</i>	<i>No rain</i>	Easterly 18.0 km/h	
	Zombe/Mwitika	0.0mm	<i>No rain</i>	<i>No rain</i>	<i>No rain</i>	<i>No rain</i>	<i>No rain</i>	<i>No rain</i>	<i>No rain</i>	Easterly 21.6 km/h	
	Voo/Kyamatu	0.0mm	<i>No rain</i>	<i>No rain</i>	<i>No rain</i>	<i>No rain</i>	<i>No rain</i>	<i>No rain</i>	<i>No rain</i>	Easterly 18.0 km/h	
	Endau/Malalani	0.0mm	<i>No rain</i>	<i>No rain</i>	<i>No rain</i>	<i>No rain</i>	<i>No rain</i>	<i>No rain</i>	<i>No rain</i>	Easterly 18.0 km/h	
Kitui Rural	Mbitini	0.0mm	<i>No rain</i>	<i>No rain</i>	<i>No rain</i>	<i>No rain</i>	<i>No rain</i>	<i>No rain</i>	<i>No rain</i>	Easterly 21.6 km/h	<i>Max 31-34 °C</i>

Sub County	Ward	Probable Total weekly amount (mm)	Probable weather Notes: Light rains <1-5 mm; Moderate rains 5-20 mm; Heavy rains <5 mm; Very heavy rains >50 mm							Winds (km/h kilometers per hour)	Temp (Tmax °C & Tmin °C)
			Tue	Wed	Thur	Fri	Sat	Sun	Mon	Weekly	Weekly
	Kisasi	0.0mm	No rain	No rain	No rain	No rain	No rain	No rain	No rain	Easterly 21.6 km/h	Min 17-19 °C
	Kyangi	0.0mm	No rain	No rain	No rain	No rain	No rain	No rain	No rain	Easterly 21.6 km/h	
	Yatta/Kwa Vonza	0.0mm	No rain	No rain	No rain	No rain	No rain	No rain	No rain	Easterly 21.6 km/h	
Kitui West	Kauwi	0.0mm	No rain	No rain	No rain	No rain	No rain	No rain	No rain	Easterly 25.2 km/h	Max 28-33 °C Min 15-19 °C
	Mutonguni	0.0mm	No rain	No rain	No rain	No rain	No rain	No rain	No rain	Easterly 25.2 km/h	
	Matinyani	0.0mm	No rain	No rain	No rain	No rain	No rain	No rain	No rain	Easterly 25.2 km/h	
	Kwa Mutonga/Kithumula	0.0mm	No rain	No rain	No rain	No rain	No rain	No rain	No rain	Easterly 21.6 km/h	
Kitui Central	Kyangwithya East	0.0mm	No rain	No rain	No rain	No rain	No rain	No rain	No rain	Easterly 25.2 km/h	Max 30-35 °C Min 16-22 °C
	Kyangwithya West	0.0mm	No rain	No rain	No rain	No rain	No rain	No rain	No rain	Easterly 21.6 km/h	
	Township	0.0mm	No rain	No rain	No rain	No rain	No rain	No rain	No rain	Easterly 21.6 km/h	
	Mulango	0.0mm	No rain	No rain	No rain	No rain	No rain	No rain	No rain	Easterly 21.6 km/h	
	Miambani	0.0mm	No rain	No rain	No rain	No rain	No rain	No rain	No rain	Easterly 21.6 km/h	

1.2 Review for January 2025

Sunny and dry weather conditions prevailed over most parts of the County during the month of January. However, rainfall was received over several areas in the County during the fourth week of the month. This rainfall was near to below the January Long Term Mean (LTM).

1.3 Outlook for January 2024 to March 2025

The rainfall outlook for February 2025 is mainly based on empirical statistical models developed from the expected evolution of global Sea Surface Temperature (SST) anomalies and the Southern Oscillation Index (SOI). Currently, the Indian Ocean Dipole (IOD) is neutral and weak La Niña conditions are still present. The forecast indicates that most parts of the County will experience generally

sunny and dry conditions throughout the month. A few areas in the County are, however, likely to experience occasional rainfall during February 2025. Temperatures are also likely to be above average over the entire County.

1.4 PART II: FURTHER ADVISORIES

SUMMARY ABOUT THE WEEKLY FORECAST:

Mainly sunny, dry and hot weather conditions expected to prevail over most parts of the County throughout the forecast period. Maximum temperatures are expected to range from 28°C - 37°C, while minimum temperatures are expected to range from 15°C - 23°C. Strong North easterly to Easterly winds with speeds exceeding 12.5 knots (6.5 m/s) are expected in most parts of the County. *Community members advised to inculcate the culture of being “weather – ready”, “climate – smart” and “water – wise” as we navigate the unfamiliar and chaotic environment of a changing climate. This will help them adapt to a changing climate while at the same time mitigating the adverse effects of Climate Change and Variability, hence becoming more resilient to the vagaries of Climate Change. In light of this weather forecast, farmers are also advised to consult with respective local extension officers from the County Ministry of Agriculture and Livestock at ward level for more advice on the best farm practices.*

Note: 1 mm of rainfall is equivalent to 1 litre of rainfall per square meter.

KEY OF SCIENTIFIC WORDS USED

Rainfall categories	
Range	Category
<5 mm	Light
5 - 20mm	Moderate
20 - 50mm	Heavy
>50mm	Very heavy
Rainfall coverage	
Term	Meaning
Most Places	Between 66% and 100%
Several Places	Between 33% and 66%
Few Places	Below 33%
Ushauri wa Idara ya Utabiri wa Hali ya Hewa: Wakulima wanashauriwa waendelea kuvuna chakula chao na kukianika vizuri kwa jua hili kuepukana na athari za sumu kuvu yaani ‘aflatoxin. Wakulima pia, wanaweza kutumia wakati huu wa upepo wa hali ya juu kupura na kupepeti chakula chao.	

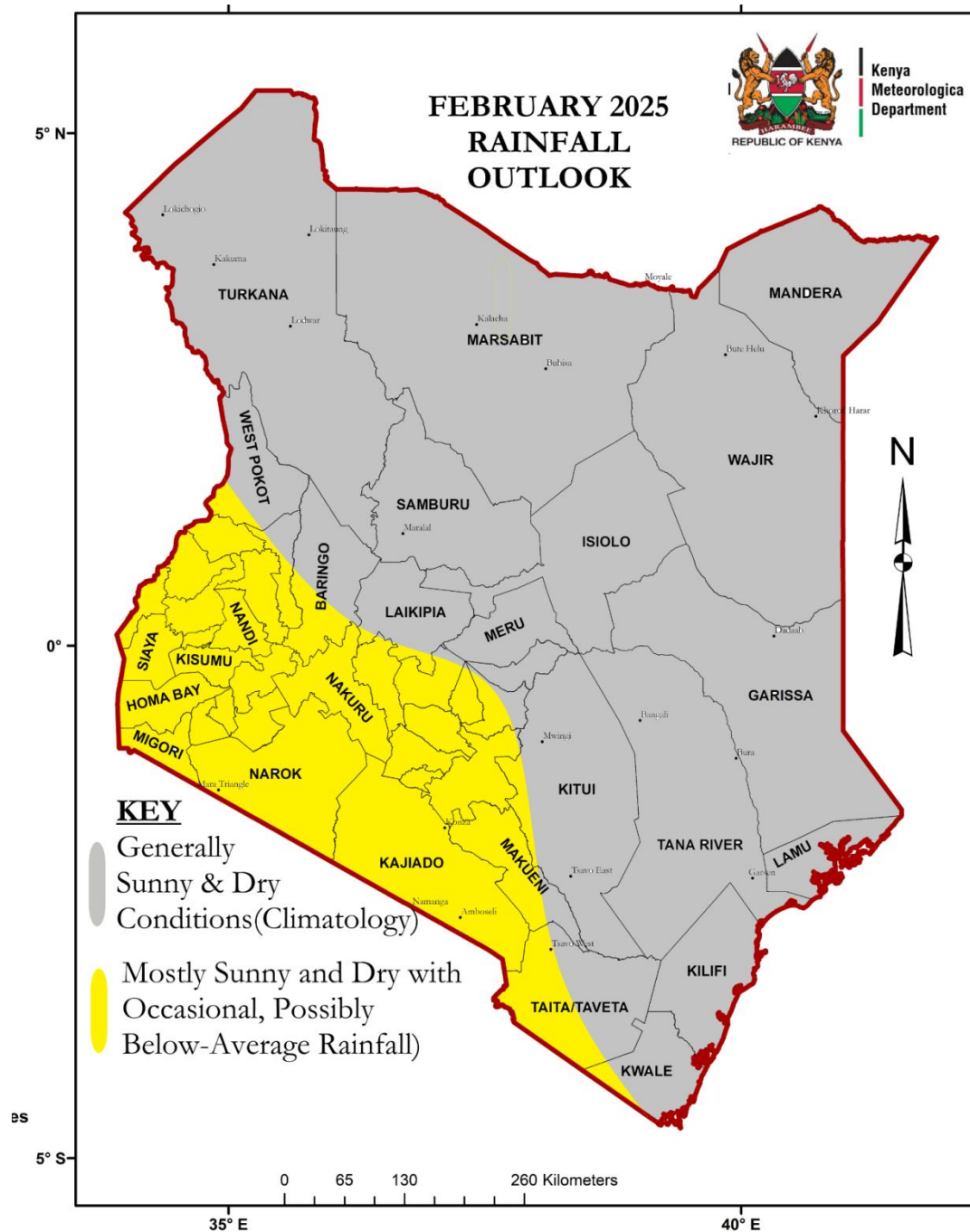
For further information, please contact:



Daniel M. Mbithi
County Director of Meteorological Services
Mobile: 0715255171
Email: mbithi_d@yahoo.com

You can find more information about the climate and weather in Kenya on the KMD website <http://www.meteo.go.ke/>

Annex I: Rainfall forecast for the month of February 2025

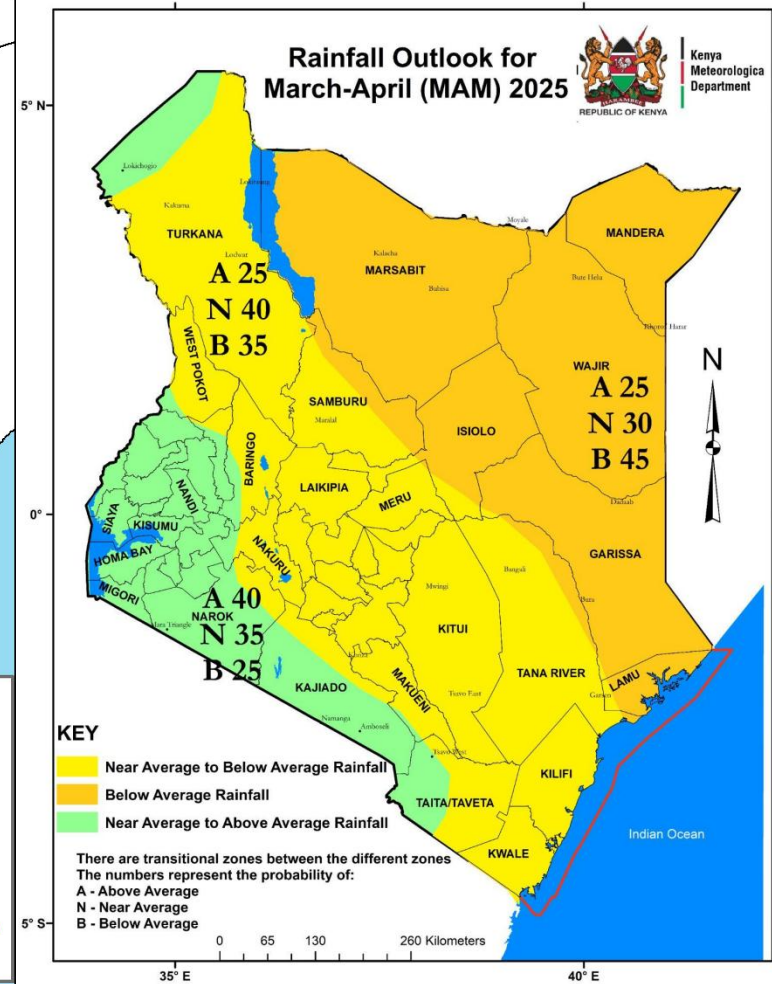
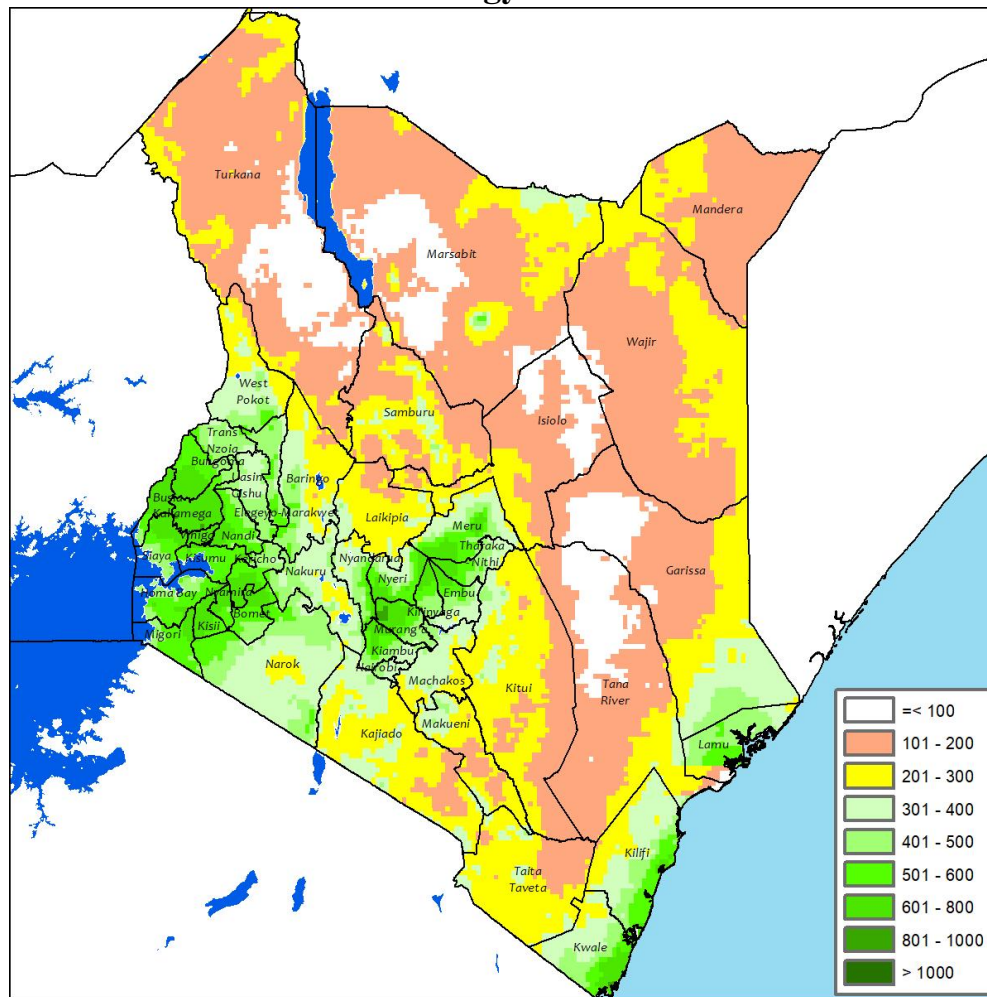


NB: Below rainfall expected over most places during the month of February 2025 in the County

[illegible]

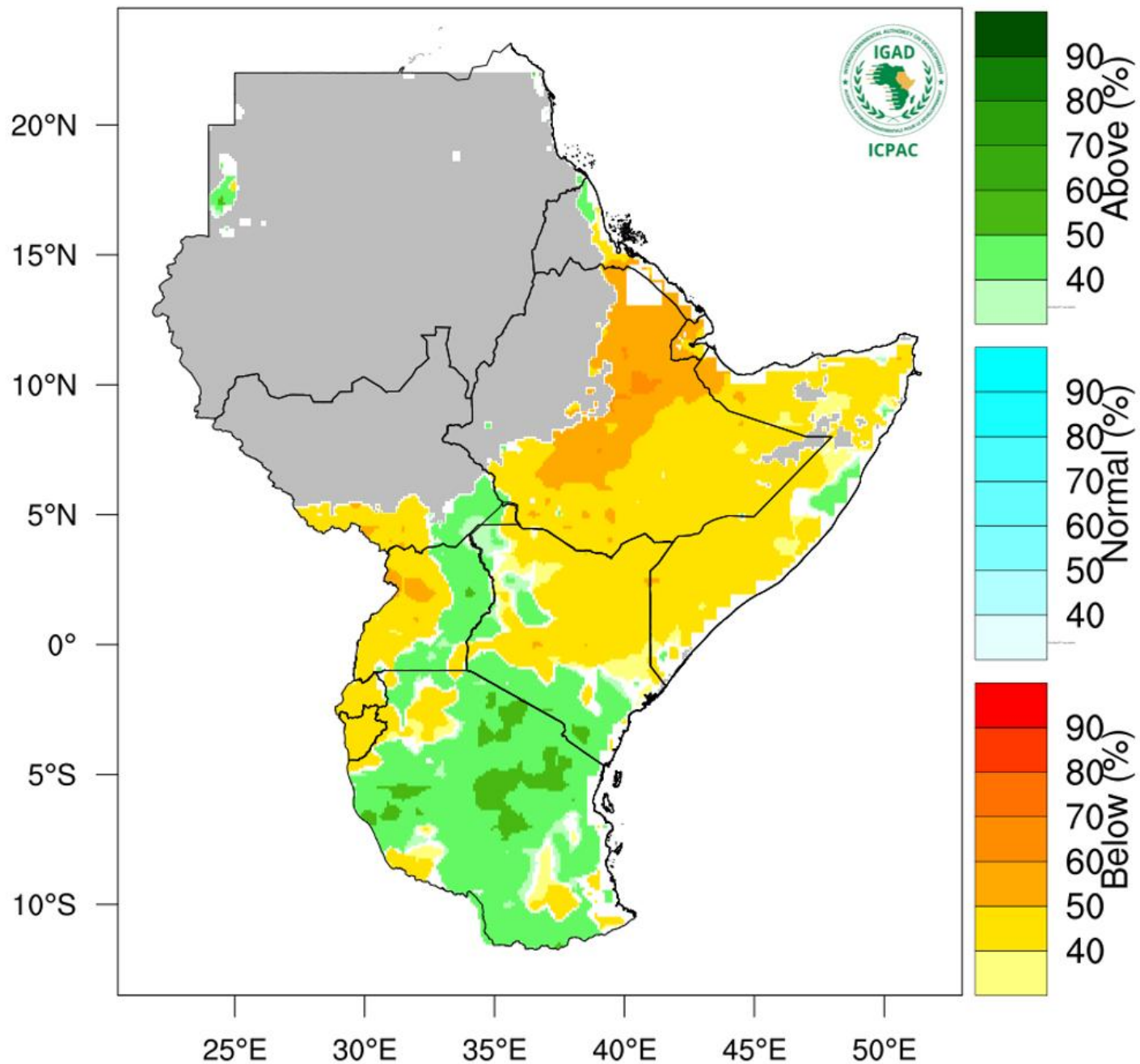
NB: Total amount of rainfall recorded in the month of January 2025

Annex III: Rainfall Climatology versus Rainfall Forecast for the months of March to May (MAM) 2025



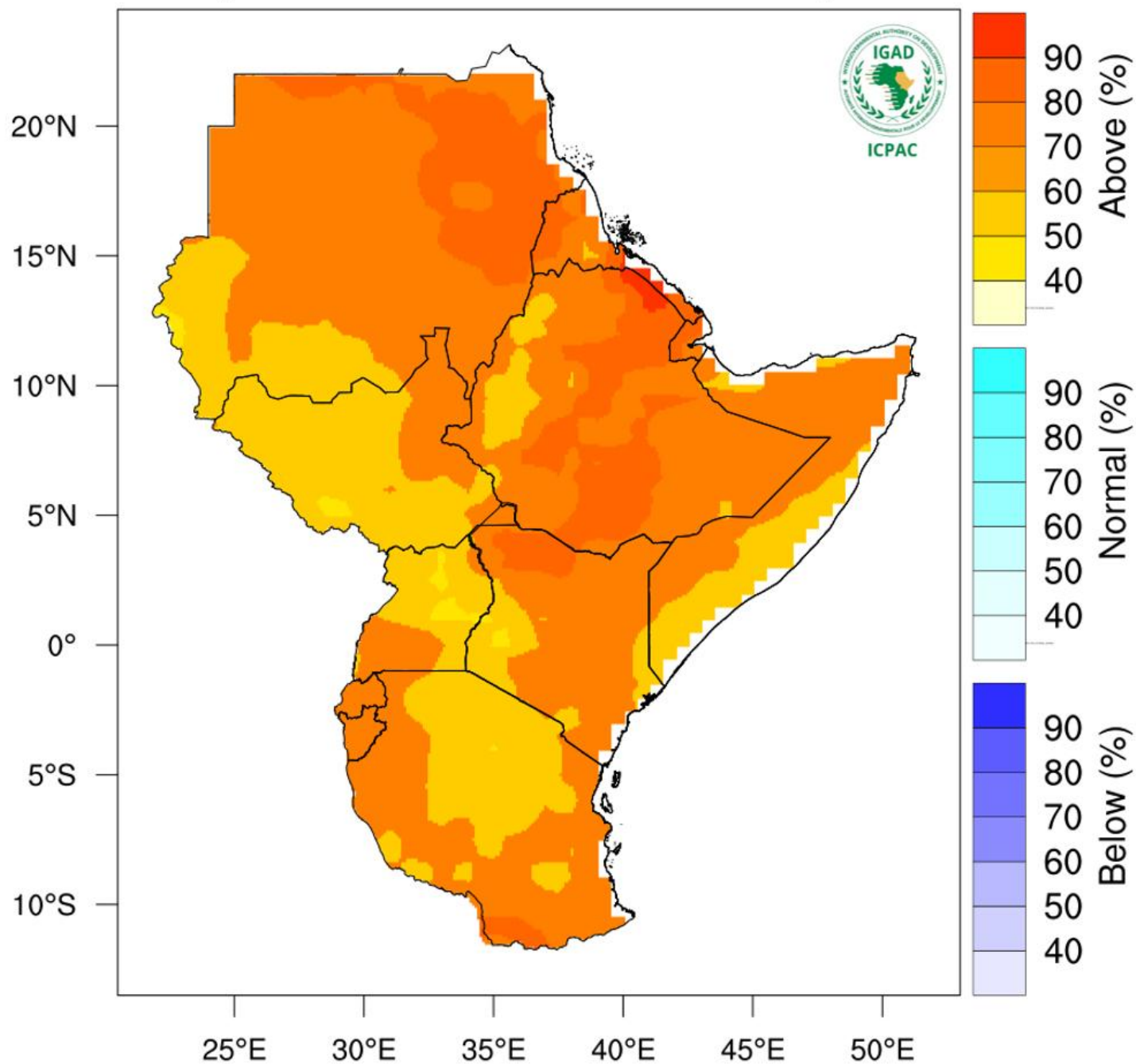
NB: The expected rainfall amounts in the county are likely to be near to below the long-term average for the season with occasional rainfall in February followed by a dry spell. Onset expected during the 4th week of March to 1st week of April.

Rainfall Probabilistic Forecast for Feb - Apr 2025



NB: Wetter than usual conditions expected over most parts of the County between February and April 2025

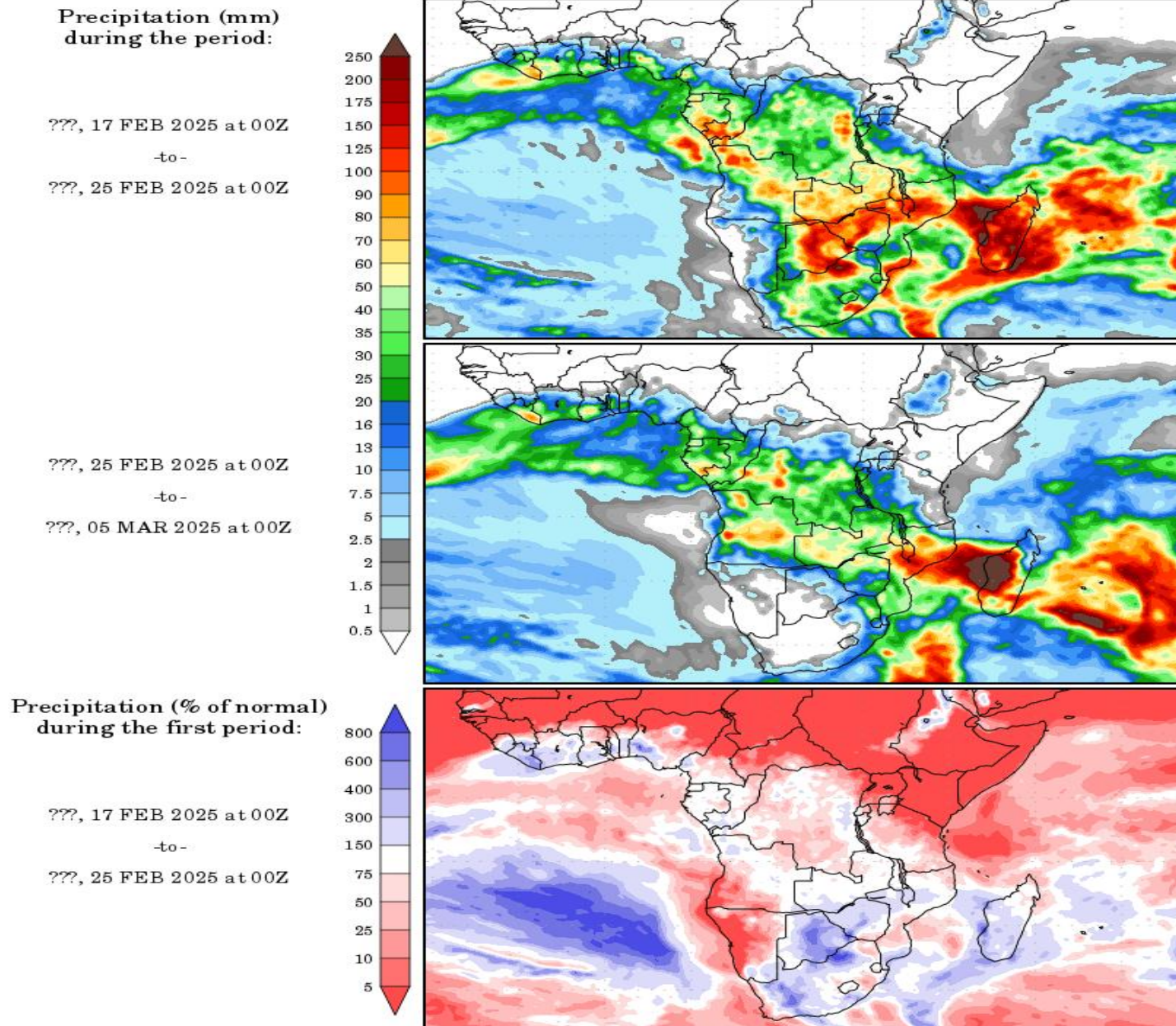
Temperature Forecast for Feb – Apr 2025



NB: Warmer than usual conditions indicated over most parts of Kitui County between February and April 2025

Annex VII: Rainfall forecast for 17th February to 5th March, 2025

Precipitation Forecasts



Precipitation forecasts from the National Centers for Environmental Prediction.
Normal rainfall derived from Xie-Arkin (CMAP) Monthly Climatology for 1979-2003.
Forecast Initialization Time: 00Z17FEB2025

NB: Below normal conditions expected over most parts of the County between 17th February to 5th March, 2025