



Our Ref: MET/7/293

Date: 03 February 2025

## SEVEN-DAY WEATHER FORECAST FOR 4 TO 10 FEBRUARY 2025

### SUMMARY

#### Forecast for 4 to 10 February 2025

- Mainly sunny and dry weather conditions expected to prevail over most parts of the country. However, occasional rainfall may be experienced over isolated areas over the southwestern portion of the country.
- Average daytime (maximum) temperatures exceeding 30°C are expected over the Coast, North-eastern, North-western regions, South-eastern Lowlands and parts of the Highlands West of the Rift Valley.
- Average night-time (minimum) temperatures are expected to be less than 10°C in some areas of the Highlands East of the Rift Valley, the Central Rift Valley, and the South-eastern lowlands.

#### Weather Review for 28 January to 3 February 2025

- Rainfall was recorded over parts of the Highlands West and East of the Rift Valley, the Lake Victoria Basin, South Rift Valley, some parts of the Coastal region and the South-eastern lowlands
- Day-time (maximum) temperatures decreased at most stations, except in Mombasa, Msabaha, Mtwapa, Lodwar, Marsabit, Garissa, Kitui, and Makindu stations, where temperatures increased.
- Night-time (minimum) temperatures decreased in Kisii, Suba, Voi, Lamu, Malindi, Msabaha, Mtwapa and Mombasa, among others, while they increased in several other stations.

### 1 FORECAST FOR 4 TO 10 FEBRUARY 2025

Mainly sunny and dry weather conditions expected to prevail over most parts of the country. However, occasional rainfall may be experienced over isolated areas over the southwestern part of the country, as illustrated in **Figure 1**.

Average daytime (maximum) temperatures, exceeding 30°C, are expected over the Coast, North-eastern, North-western regions, South-eastern Lowlands and parts of the Highlands West of the Rift Valley, as illustrated in **Figure 2**.

Average night-time (minimum) temperatures are expected to be less than 10°C in some areas of the Highlands East of the Rift Valley, the Central Central Rift Valley, and the southeastern lowlands (Figure 3).

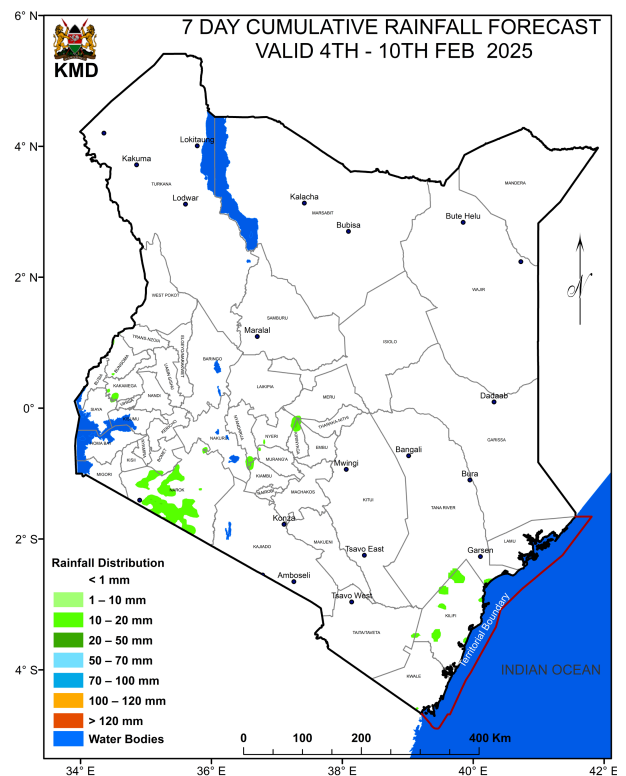
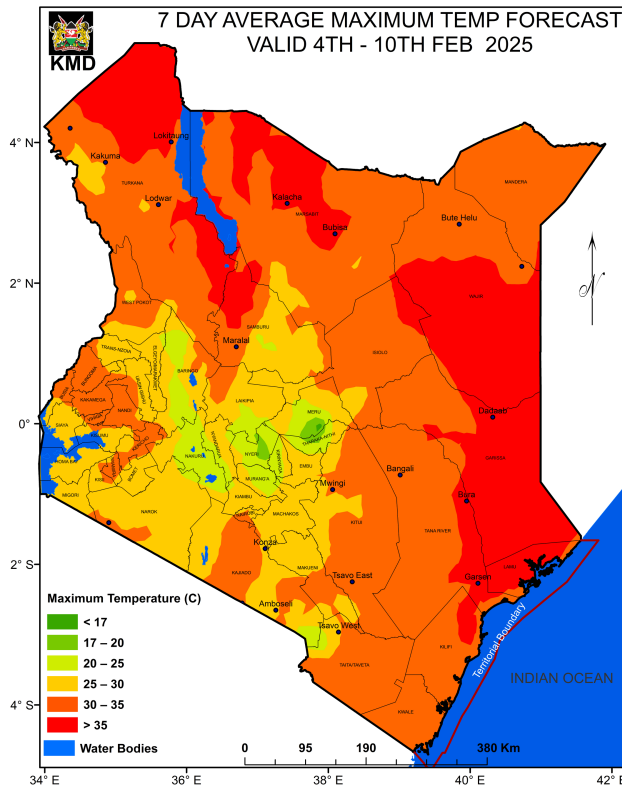
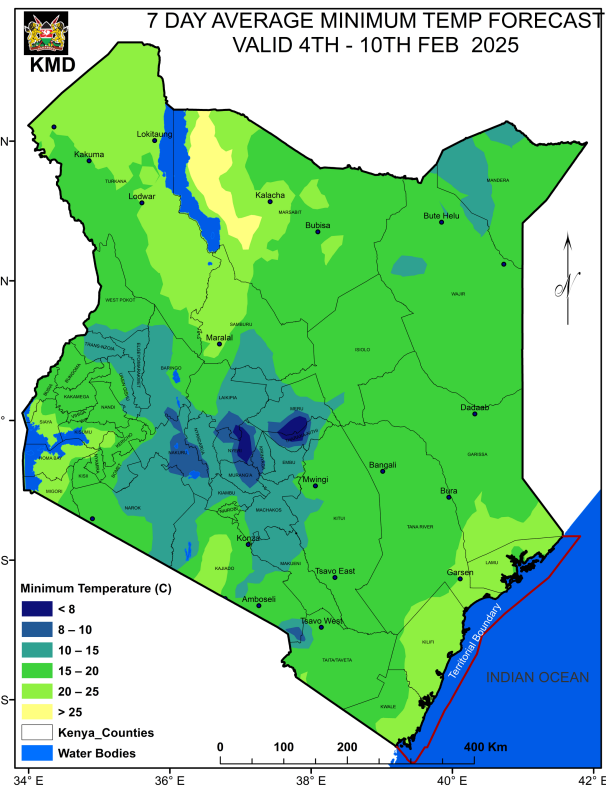


FIG 1: Expected total rainfall for 4 – 10 February 2025



**FIGURE 3: FORECASTED SEVEN - DAY MAXIMUM TEMPERATURES FOR 4 - 10 FEBRUARY, 2025**



**FIGURE 3: FORECASTED SEVEN - DAY MINIMUM TEMPERATURES FOR 4 - 10 FEBRUARY, 2025**

## 1.1 DETAILED REGIONAL RAINFALL FORECAST FOR 4 TO 10 FEBRUARY 2025

### 1.1.1 The Lake Victoria Basin, the Central and South Rift Valley and parts of the Highlands West of the Rift Valley (*Nandi, Kakamega, Vihiga, Bungoma, Siaya, Busia, Nakuru, Trans-Nzoia, Kisii, Nyamira, Kericho, Bomet, Kisumu, Homabay, Migori and Narok Counties*):

Mainly sunny intervals are expected to prevail throughout the week. However, a few areas are likely to experience afternoon showers and thunderstorms at the beginning and end of the forecast period. Nights are expected to be mainly partly cloudy throughout the forecast period.

### 1.1.2 The North Rift Valley and parts of the Highlands West of the Rift Valley (*Uasin-Gishu, Elgeyo-Marakwet, Baringo and West-Pokot Counties*)

Sunny intervals are expected during the day while nights are likely to be partly cloudy.

### 1.1.3 North-western Kenya (*Turkana and Samburu Counties*):

Sunny conditions are expected during the day while nights are likely to be partly cloudy.

### 1.1.4 The Highlands East of the Rift Valley (including Nairobi County) (*Nyandarua, Nyeri, Laikipia, Kirinyaga, Murang'a, Kiambu, Meru, Embu, Tharaka-Nithi and Nairobi Counties*):

Mainly sunny intervals are expected to prevail during the forecast period. However, a few areas are likely to experience afternoon showers towards the end of the week. Nights are expected to be partly cloudy.

### 1.1.5 North-eastern Kenya (Marsabit, Mandera, Wajir, Garissa and Isiolo Counties):

Sunny intervals are expected during the day while nights are likely to be partly cloudy.

### 1.1.6 The South-eastern lowlands (Machakos, Kitui, Makueni, Kajiado and Taita-Taveta Counties as well as the inland parts of Tana-River County):

Mainly sunny intervals expected to prevail during the day. However, a few areas are likely to experience afternoon showers towards the end of the forecast period. Nights are expected to be partly cloudy.

### 1.1.7 The Coast (Mombasa, Kilifi, Lamu and Kwale Counties as well as the coastal parts of Tana-River County):

Daylong sunny intervals are expected to persist, with a few areas experiencing light morning showers towards the end of the forecast period. Nights are expected to be partly cloudy.

WEATHER REVIEW FOR 27 JAN TO 2 FEB 2025

### 1.1.8 Rainfall Review

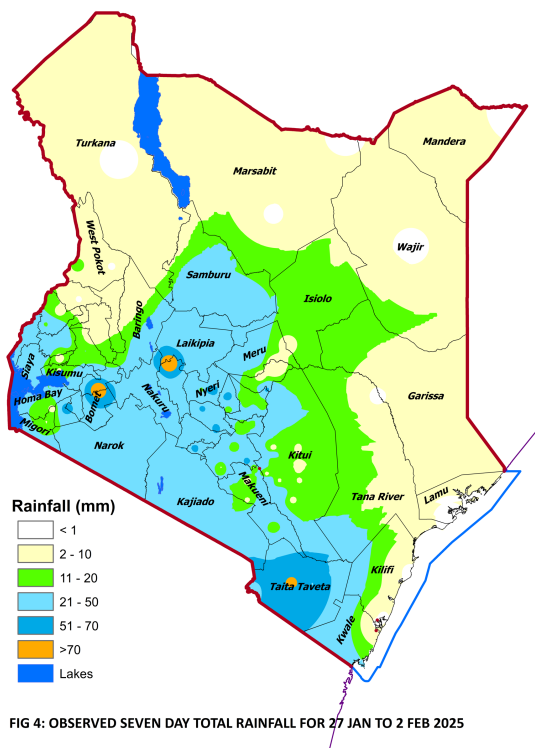


FIG 4: OBSERVED SEVEN DAY TOTAL RAINFALL FOR 27 JAN TO 2 FEB 2025

Rainfall was recorded over parts of the Highlands West and East of the Rift Valley, the Lake Victoria Basin, South Rift Valley, some parts of the Coastal region and the South-eastern lowlands, as illustrated in **Figures 4 & 5**.

Comparing the 20 to 26 January 2025 and 27 January to 2 February 2025 periods, it is noted that rainfall amounts increased in the latter period.

The highest seven-day rainfall total (88.1 mm) was recorded at Nyahururu Rainfall Station in Nyandarua County.

Dagoretti station in Nairobi recorded the highest amount of rainfall within 24-hours: 64.3 mm on 28 January 2025.

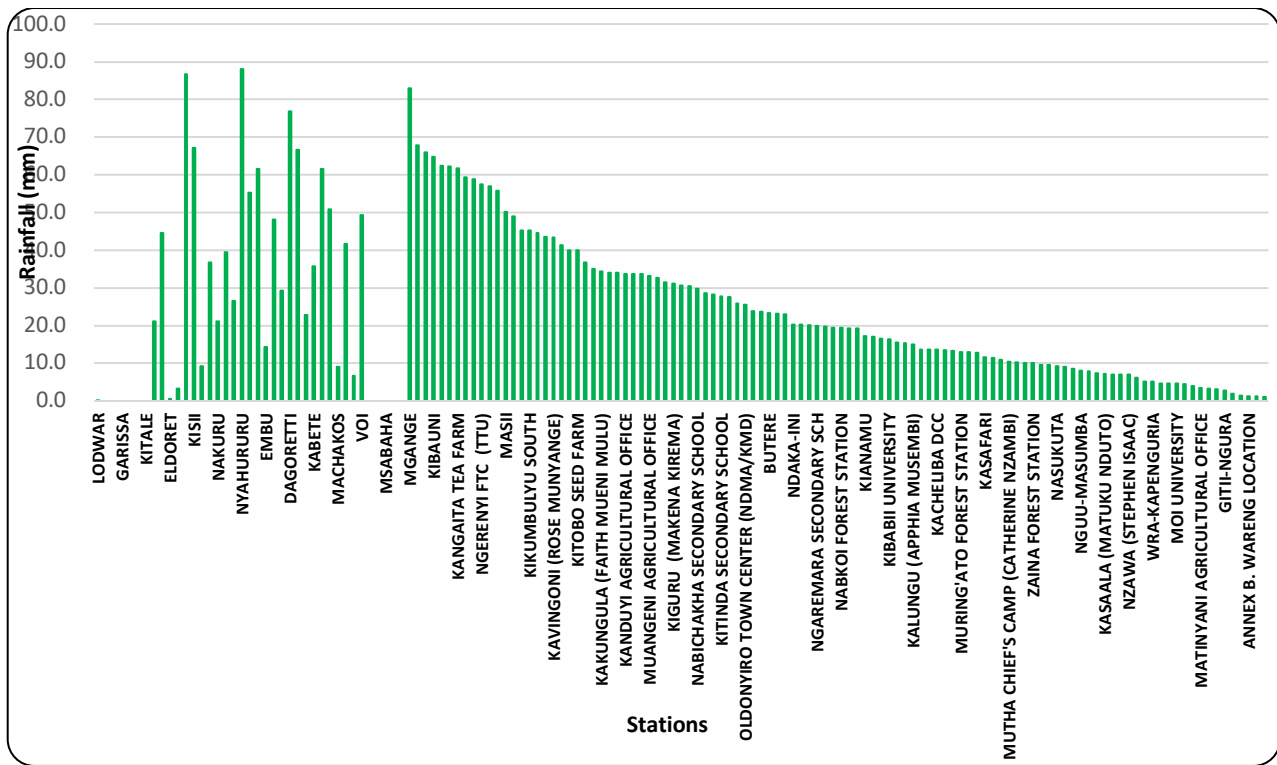


Figure 5: Seven-day total rainfall for 27 January - 2 February 2025

## 1.2 Temperature Review

Comparing the 20 to 26 January 2025 and 27 January to 2 February 2025 periods, it is noted that daytime (maximum) temperatures decreased at most stations, except in Mombasa, Msabaha, Mtwapa, Lodwar, Marsabit, Garissa, Kitui, and Makindu stations, where temperatures increased. Night-time (minimum) temperatures decreased in Kisii, Suba, Voi, Lamu, Malindi, Msabaha, Mtwapa and Mombasa, while they increased in several other stations.

Lodwar Meteorological Station recorded the highest daily maximum temperature (39.8°C on 28 January 2025), while Nyahururu Meteorological Station recorded the lowest daily minimum temperature at 7.2°C on 31 January 2025. Lodwar Meteorological Station also recorded the highest seven-day average maximum temperature, while Nyahururu Meteorological Station recorded the lowest seven-day average minimum temperature, with values of 38.3°C and 9.6°C, respectively (see Figure 6).

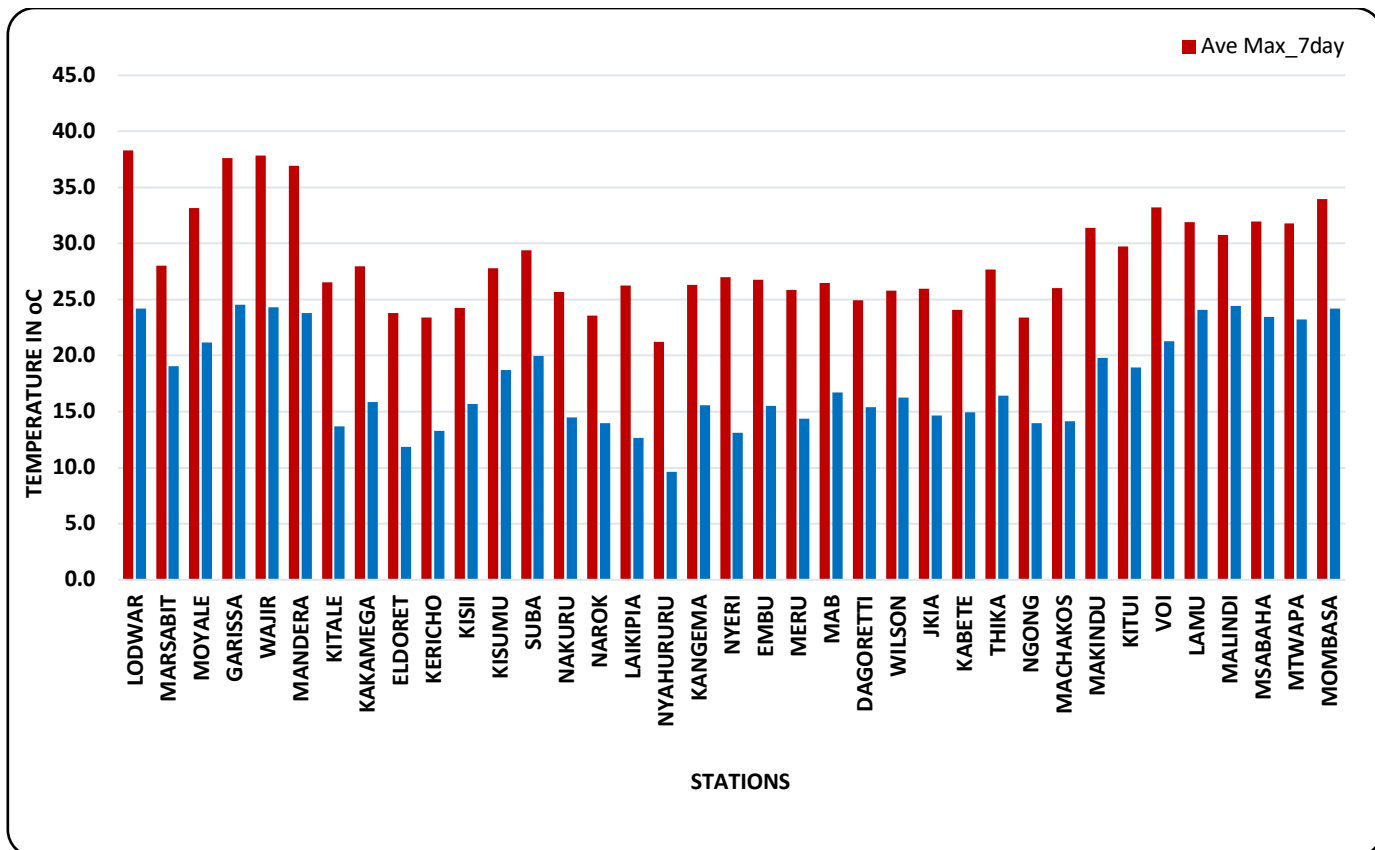


Figure 6: Seven-day average maximum and minimum temperatures for 27 January to 2 February 2025

*N.B: This forecast should be used in conjunction with the daily (24-hour) and five-day forecasts issued by this Department. County specific forecasts are available from the offices of respective County Directors of Meteorological Services.*

**KEY TO SCIENTIFIC WORDS USED**

<i>24-hour rainfall categories</i>	
<i>Range</i>	<i>Category</i>
<5mm	Light
5-20mm	Moderate
20-50mm	Heavy
>50mm	Very heavy

<i>Rainfall coverage</i>	
<i>Term</i>	<i>Meaning</i>
Most places	Between 66% and 100%
Several places	Between 33% and 66%
Few places	Less than 33%

Dr. David Gikungu  
**DIRECTOR OF METEOROLOGICAL SERVICES**