



Our Ref: MET/7/289

Date: 16 December 2024

SEVEN-DAY WEATHER FORECAST FOR 17 TO 23 DECEMBER 2024

SUMMARY

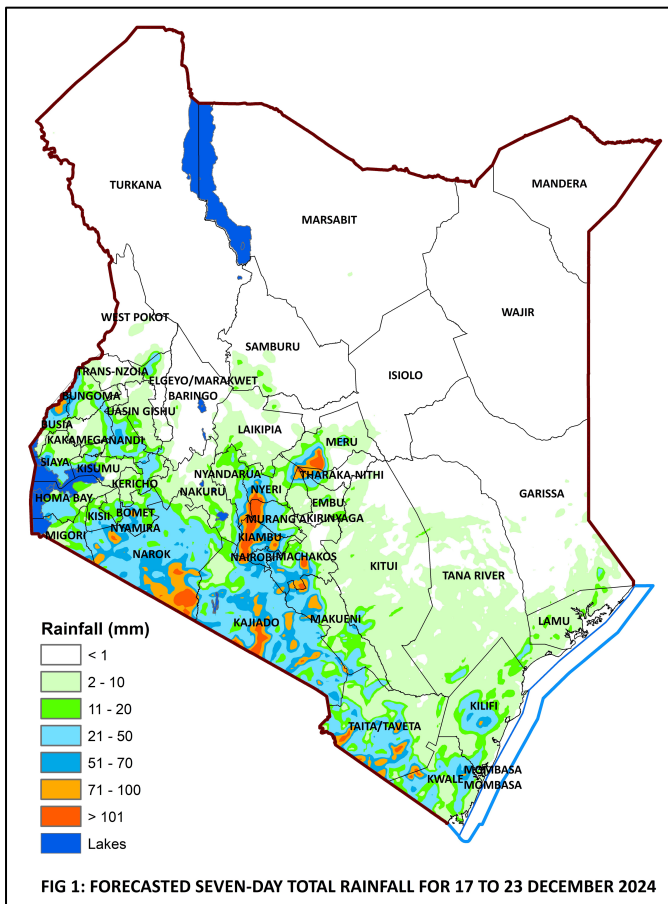
Forecast for 17 to 23 December 2024

- Rainfall is expected over some parts of the Highlands East and West of the Rift Valley, the Lake Victoria Basin, the Central and South Rift Valley, the South-eastern lowlands and the Coast.
- North-eastern and North-western Kenya are likely to be generally sunny and dry.

Weather Review for 9 to 15 December 2024

- Rainfall was recorded in several parts of the country most notably the South-eastern lowlands and the Coast.
- Day-time (maximum) temperatures increased over most parts of the country though a number of stations including Voi, Malindi and Meru recorded slight cooling.
- Night-time (minimum) temperatures also increased throughout the country with only a few coastal stations recording marginal decreases.

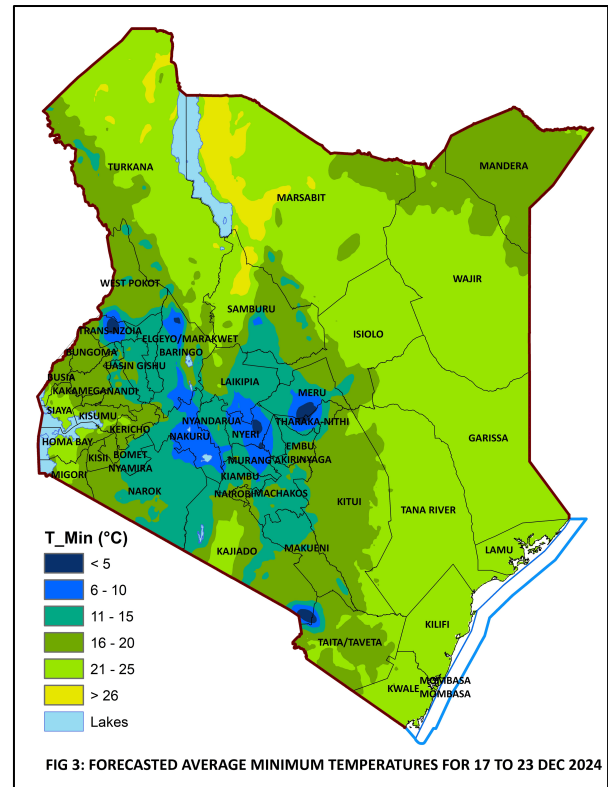
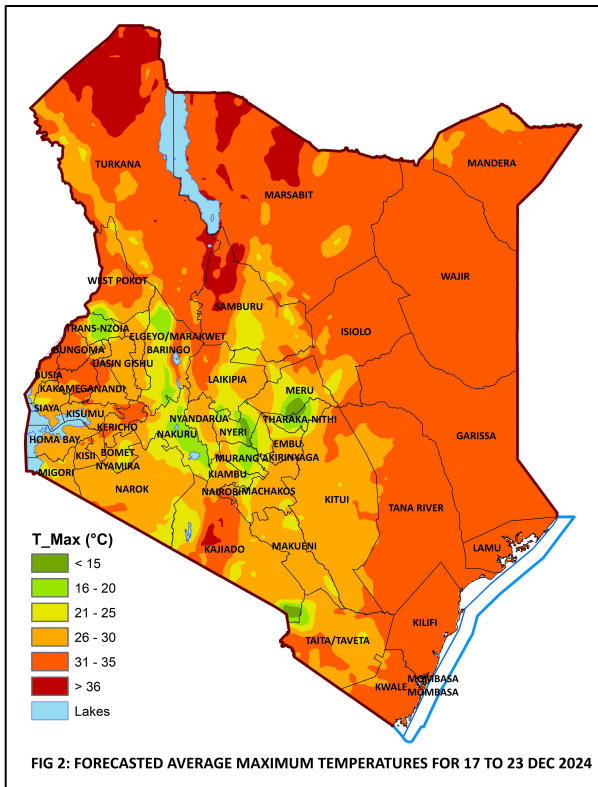
1 FORECAST FOR 17 TO 23 DECEMBER 2024



Rainfall is expected to continue over some parts of the Highlands East and West of the Rift Valley, the Lake Victoria Basin, the Central and South Rift Valley, the South-eastern lowlands and the Coast as shown in **Figure 1**. North-eastern and North-western Kenya are likely to be generally sunny and dry.

Average daytime (maximum) temperatures of more than 30°C will be experienced in several parts of the country including the Coast, North-eastern and North-western Kenya as shown in **Figure 2**.

Average night-time (minimum) temperatures will be less than 10°C in some parts of the Highlands East and West of the Rift Valley and the Central and North Rift Valley as shown in **Figure 3**.



1.1 DETAILED REGIONAL RAINFALL FORECAST FOR 17 TO 23 DECEMBER 2024

1.1.1 The Lake Victoria Basin, the Central and South Rift Valley and parts of the Highlands West of the Rift Valley (*Nandi, Kakamega, Vihiga, Bungoma, Siaya, Busia, Nakuru, Trans-Nzoia, Kisii, Nyamira, Kericho, Bomet, Kisumu, Homabay, Migori and Narok Counties*):

Sunny intervals are expected in the morning though occasional rains may occur over few places. Afternoon and night showers and thunderstorms are expected over few places.

1.1.2 The North Rift Valley and parts of the Highlands West of the Rift Valley (*Uasin-Gishu, Elgeyo-Marakwet, Baringo and West-Pokot Counties*)

Sunny intervals are expected during the day while nights are likely to be partly cloudy.

1.1.3 North-western Kenya (*Turkana and Samburu Counties*):

Sunny intervals are expected during the day while nights are likely to be partly cloudy.

1.1.4 The Highlands East of the Rift Valley (including Nairobi County) (*Nyandarua, Nyeri, Laikipia, Kirinyaga, Murang'a, Kiambu, Meru, Embu, Tharaka-Nithi and Nairobi Counties*):

Intermittent cloudiness is expected in the morning giving way to sunny intervals. Afternoon and night showers are likely to occur over few places.

1.1.5 North-eastern Kenya (*Marsabit, Mandera, Wajir, Garissa and Isiolo Counties*):

Sunny intervals are expected during the day while nights are likely to be partly cloudy.

1.1.6 The South-eastern lowlands (*Machakos, Kitui, Makueni, Kajiado and Taita-Taveta Counties as well as the inland parts of Tana-River County*):

Morning rains as well as afternoon and night showers are expected to occur over few places.

1.1.7 The Coast (*Mombasa, Kilifi, Lamu and Kwale Counties as well as the coastal parts of Tana-River County*):

Morning, afternoon and night showers are expected over few places.

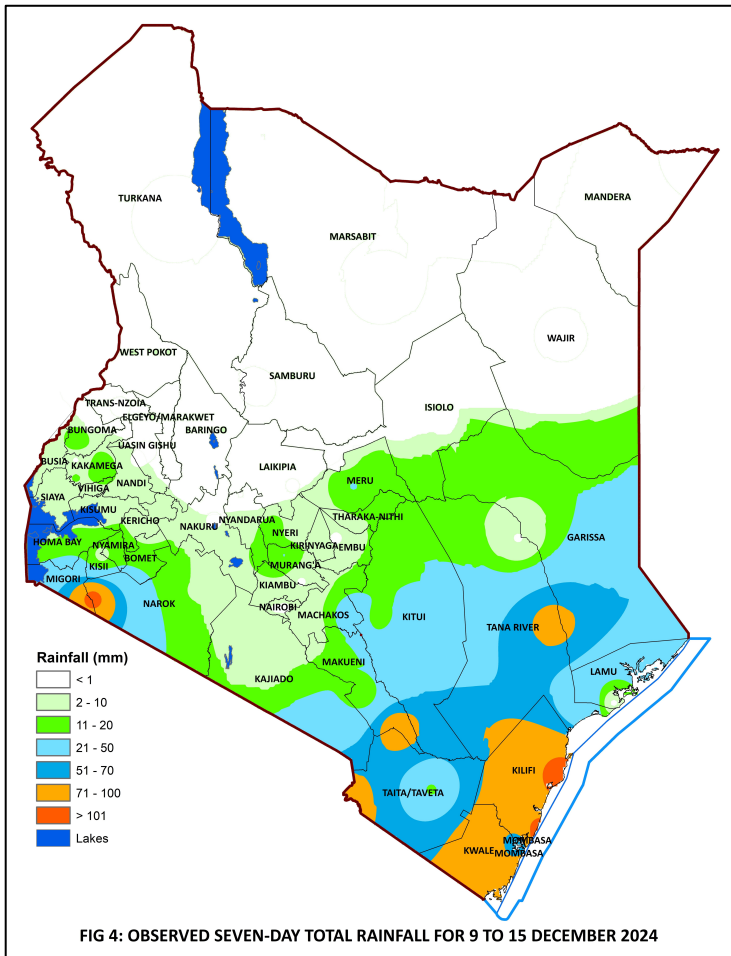
1.2 DETAILED TEMPERATURE FORECAST FOR 17 TO 23 DECEMBER 2024

Expected maximum and minimum temperatures for selected towns and cities are shown in **Table 1**.

TABLE 1: FORECASTED MAXIMUM AND MINIMUM TEMPERATURES FOR SELECTED CITIES AND TOWNS								
CITY/TOWN	MAX (°C)	MIN (°C)	CITY/TOWN	MAX (°C)	MIN (°C)	CITY/TOWN	MAX (°C)	MIN (°C)
LODWAR	37.0	21.0	KISUMU	30.0	18.0	THIKA	29.0	14.0
MARSABIT	27.0	18.0	SUBA	29.0	21.0	NGONG	26.0	13.0
MOYALE	33.0	18.0	NAKURU	27.0	12.0	MACHAKOS	28.0	14.0
GARISSA	36.0	24.0	NAROK	28.0	10.0	MAKINDU	32.0	19.0
WAJIR	37.0	23.0	LAIKIPIA	28.0	09.0	KITUI	28.0	17.0
MANDERA	37.0	22.0	NYAHURURU	23.0	07.0	VOI	31.0	21.0
KITALE	28.0	11.0	KANGEMA	28.0	15.0	LAMU	34.0	24.0
KAKAMEGA	30.0	14.0	NYERI	29.0	11.0	MALINDI	31.0	23.0
ELDORET	25.0	09.0	EMBU	28.0	13.0	MSABAHA	33.0	24.0
KERICHO	26.0	09.0	MERU	28.0	13.0	MTWAPA	32.0	23.0
KISII	27.0	16.0	NAIROBI	29.0	13.0	MOMBASA	34.0	24.0

2 WEATHER REVIEW FOR 9 TO 15 DECEMBER 2024

2.1.1 Rainfall Review

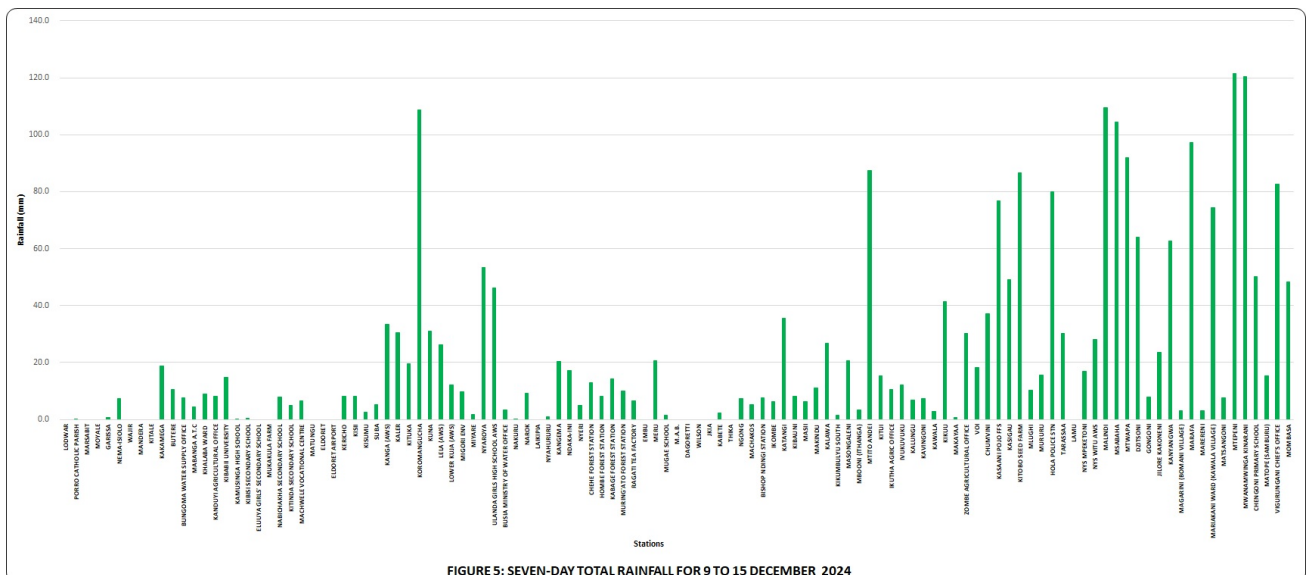


Rainfall was recorded in several parts of the country most notably the South-eastern lowlands and the Coast as shown in **Figures 4 & 5**.

Comparing the 2 to 8 December 2024 and the 9 to 15 December 2024 periods, it is noted that there was an increase in rainfall amounts over the areas that received rainfall.

The highest seven-day rainfall total (121.5 mm) was recorded at Mtepeni Rainfall Station in Kilifi County.

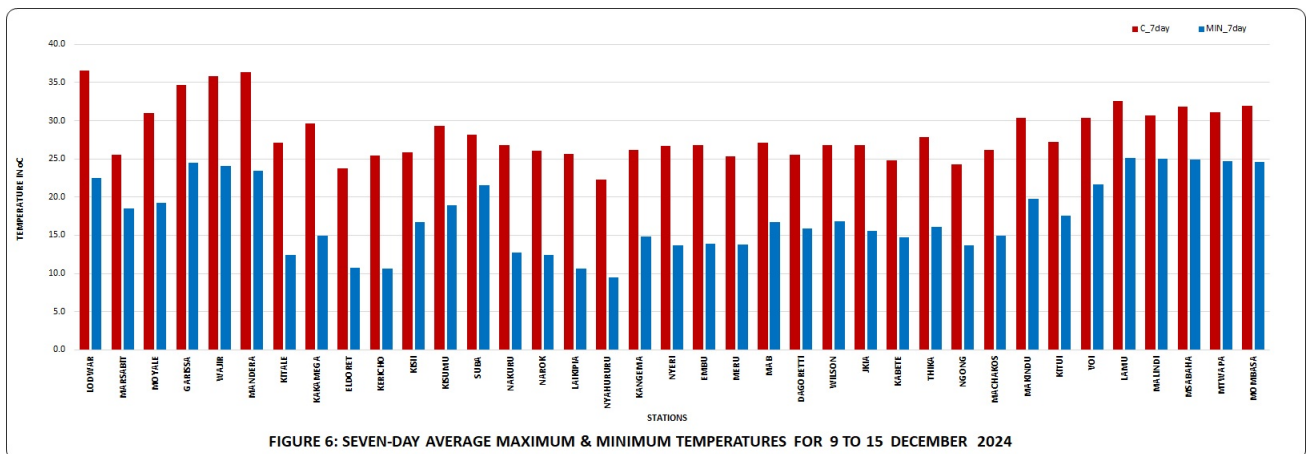
Malindi Meteorological Station recorded the highest amount of rainfall within 24-hours: 109.6mm on 9 December 2024.



2.2 Temperature Review

Comparing the 2 to 8 December 2024 and the 9 to 15 December 2024 periods, it is noted that day-time (maximum) temperatures increased over most parts of the country though a number of stations including Voi, Malindi and Meru recorded slight cooling. Night-time (minimum) temperatures also increased throughout the country with only a few coastal stations recording marginal decreases.

Lodwar Meteorological Station recorded the highest daily maximum temperature: 37.4°C on 15 December 2024 while Nyahururu Meteorological Station recorded the lowest daily minimum temperature: 7.2°C on 13 December 2024. The same stations recorded the highest seven-day average maximum temperature and the lowest seven-day average minimum temperature: 36.5°C and 9.4°C respectively (see **Figure 6**).



N.B: This forecast should be used in conjunction with the daily (24-hour) and five-day forecasts issued by this Department. County specific forecasts are available from the offices of respective County Directors of Meteorological Services.

KEY OF SCIENTIFIC WORDS USED

24-hour rainfall categories	
Range	Category
<5mm	Light
5-20mm	Moderate
20-50mm	Heavy
>50mm	Very heavy

Rainfall coverage	
Term	Meaning
Most places	Between 66% and 100%
Several places	Between 33% and 66%
Few places	Less than 33%

Dr. David Gikungu
DIRECTOR OF METEOROLOGICAL SERVICES