



For further info:

Contact: Daniel M. Mbithi

Mobile No. 0715255171

Email: mbithi_d@yahoo.com

County Director of Meteorological Services Kitui County

Weekly Weather forecast for Kitui County

1.1 PART I: WEEKLY FORECAST FOR THE PERIOD 3rd to 9th December 2024 Weather forecast Table

Sub County	Ward	Probable Total weekly amount (mm)	Probable weather							Winds (km/h kilometers per hour)	Temp (Tmax °C & Tmin °C)
			Notes: Light rains <1-5 mm; Moderate rains 5-20 mm; Heavy rains <5 mm; Very heavy rains >50 mm								
			Tue	Wed	Thur	Fri	Sat	Sun	Mon	Weekly	Weekly
Mwingi West	Nguutani	<10 mm	No rain	No rain	No rain	No rain	Light rain	Light rain	Light rain	Easterly 18.0 km/h	Max 26-30 °C Min 16-18 °C
	Kyome/Thaana	<10 mm	No rain	No rain	No rain	Light rain	Light rain	Light rain	Light rain	Easterly 18.0 km/h	
	Kiomo/Kyethani	<10 mm	No rain	No rain	No rain	Light rain	Light rain	Light rain	Light rain	Easterly 18.0 km/h	
	Migwani	<10 mm	No rain	No rain	No rain	Light rain	Light rain	Light rain	Light rain	Easterly 18.0 km/h	
Mwingi North	Ngomeni	<5 mm	No rain	No rain	No rain	No rain	No rain	Light rain	Light rain	Easterly 18.0 km/h	Max 28-33 °C Min 18-22 °C
	Kyuso	<5 mm	No rain	No rain	No rain	No rain	No rain	Light rain	Light rain	Easterly 18.0 km/h	
	Tseikuru	<5 mm	No rain	No rain	No rain	No rain	No rain	Light rain	Light rain	Easterly 14.4 km/h	
	Tharaka	<10 mm	No rain	No rain	No rain	No rain	No rain	Light rain	Light rain	Easterly 18.0 km/h	
	Mumoni	<10 mm	No rain	No rain	No rain	No rain	No rain	Light rain	Light rain	Easterly 18.0 km/h	

Sub County	Ward	Probable Total weekly amount (mm)	Probable weather Notes: Light rains <1-5 mm; Moderate rains 5-20 mm; Heavy rains <5 mm; Very heavy rains >50 mm							Winds (km/h kilometers per hour)	Temp (Tmax °C & Tmin °C)
			Tue	Wed	Thur	Fri	Sat	Sun	Mon	Weekly	Weekly
Mwingi Central	Central	<5 mm	No rain	No rain	No rain	No rain	No rain	Light rain	Light rain	Easterly 18.0 km/h	Max 29-32 °C Min 18-21 °C
	Kivou	<5 mm	No rain	No rain	No rain	No rain	No rain	Light rain	Light rain	Easterly 18.0 km/h	
	Mui	<5 mm	No rain	No rain	No rain	No rain	No rain	Light rain	Light rain	Easterly 14.4 km/h	
	Waita	<5 mm	No rain	No rain	No rain	No rain	No rain	Light rain	Light rain	Easterly 18.0 km/h	
	Nuu	<5 mm	No rain	No rain	No rain	No rain	No rain	Light rain	Light rain	Easterly 14.4 km/h	
	Nguni	<5 mm	No rain	No rain	No rain	No rain	No rain	Light rain	Light rain	Easterly 14.4 km/h	
Kitui South	Ikanga/Kyatune	>10 mm	No rain	No rain	No rain	Light rain	Light rain	Light rain	Light rain	Easterly 14.4 km/h	Max 26-30 °C Min 18-21 °C
	Mutomo/Kibwea	>10 mm	No rain	No rain	No rain	Light rain	Light rain	Light rain	Light rain	Easterly 14.4 km/h	
	Kanziko/Simisi	<10 mm	No rain	No rain	No rain	Light rain	Light rain	Light rain	Light rain	Easterly 14.4 km/h	
	Mutha	<10 mm	No rain	No rain	No rain	Light rain	Light rain	Light rain	Light rain	Easterly 14.4 km/h	
	Ikutha	<10 mm	No rain	No rain	No rain	Light rain	Light rain	Light rain	Light rain	Easterly 14.4 km/h	
	Athi	<10 mm	No rain	No rain	No rain	Light rain	Light rain	Light rain	Light rain	Easterly 14.4 km/h	
Kitui East	Chuluni	<10 mm	No rain	No rain	No rain	Light rain	Light rain	Light rain	Light rain	Easterly 14.4 km/h	Max 26-31 °C Min 17-21 °C
	Nzambani	<10 mm	No rain	No rain	No rain	Light rain	Light rain	Light rain	Light rain	Easterly 14.4 km/h	
	Mutito/Kaliku	<10 mm	No rain	No rain	No rain	Light rain	Light rain	Light rain	Light rain	Easterly 14.4 km/h	
	Zombe/Mwitika	>10 mm	No rain	No rain	No rain	Light rain	Light rain	Light rain	Light rain	Easterly 14.4 km/h	
	Voo/Kyamatu	>10 mm	No rain	No rain	No rain	Light rain	Light rain	Light rain	Light rain	Easterly 14.4 km/h	
	Endau/Malalani	>10 mm	No rain	No rain	No rain	Light rain	Light rain	Light rain	Light rain	Easterly 14.4 km/h	
Kitui Rural	Mbitini	>10 mm	No rain	No rain	No rain	Light rain	Light rain	Light rain	Light rain	Easterly 14.4 km/h	Max 26-28 °C

Sub County	Ward	Probable Total weekly amount (mm)	Probable weather							Winds (km/h kilometers per hour)	Temp (Tmax °C & Tmin °C)
			Notes: Light rains <1-5 mm; Moderate rains 5-20 mm; Heavy rains <5 mm; Very heavy rains >50 mm								
			Tue	Wed	Thur	Fri	Sat	Sun	Mon		
	Kisasi	>10 mm	No rain	No rain	No rain	Light rain	Light rain	Light rain	Light rain	Easterly 14.4 km/h	Min 16-20 °C
	Kanyangi	>10 mm	No rain	No rain	No rain	Light rain	Light rain	Light rain	Light rain	Easterly 14.4 km/h	
	Yatta/Kwa Vonza	>10 mm	No rain	No rain	No rain	Light rain	Light rain	Light rain	Light rain	Easterly 14.4 km/h	
Kitui West	Kauwi	>10 mm	No rain	No rain	No rain	Light rain	Light rain	Light rain	Light rain	Easterly 14.4 km/h	Max 24-28 °C Min 16-18 °C
	Mutonguni	>10 mm	No rain	No rain	No rain	Light rain	Light rain	Light rain	Light rain	Easterly 14.4 km/h	
	Matinyani	>10 mm	No rain	No rain	No rain	Light rain	Light rain	Light rain	Light rain	Easterly 14.4 km/h	
	Kwa Mutonga/Kithumula	<5 mm	No rain	No rain	No rain	Light rain	Light rain	Light rain	Light rain	Easterly 18.0 km/h	
Kitui Central	Kyangwithya East	>10 mm	No rain	No rain	No rain	Light rain	Light rain	Light rain	Light rain	Easterly 14.4 km/h	Max 25-30 °C Min 17-20 °C
	Kyangwithya West	>10 mm	No rain	No rain	No rain	Light rain	Light rain	Light rain	Light rain	Easterly 14.4 km/h	
	Township	>10 mm	No rain	No rain	No rain	Light rain	Light rain	Light rain	Light rain	Easterly 14.4 km/h	
	Mulango	>10 mm	No rain	No rain	No rain	Light rain	Light rain	Light rain	Light rain	Easterly 14.4 km/h	
	Miambani	>10 mm	No rain	No rain	No rain	Light rain	Light rain	Light rain	Light rain	Easterly 14.4 km/h	

1.2 Outlook for December 2024

December typically marks the end of the October-November-December (OND) “short rains” season in Kenya. The forecast for December indicates that most parts of Kitui county are likely to experience below-average (generally depressed) rainfall, with an exception of few parts of Kitui South, Rural and East Sub-counties which are expected to receive near to above-average rainfall.

The rainfall distribution, both in time and space, is expected to be generally poor. However, episodes of heavy rainfall are likely to continue in some parts of the county during this period. The OND 2024 seasonal rainfall is expected to cease between the third and fourth weeks of December across several Sub-counties.

This climate outlook for December 2024 is mainly based on the prevailing and expected Sea Surface Temperature Anomalies (SSTAs) over the Pacific, Indian Ocean and Atlantic Ocean. The El Niño–Southern Oscillation (ENSO) is currently neutral, with SSTs being near

average in the central and eastern Pacific Ocean. La Niña typically brings drier-than-normal conditions to parts of East Africa, though its impact can vary.

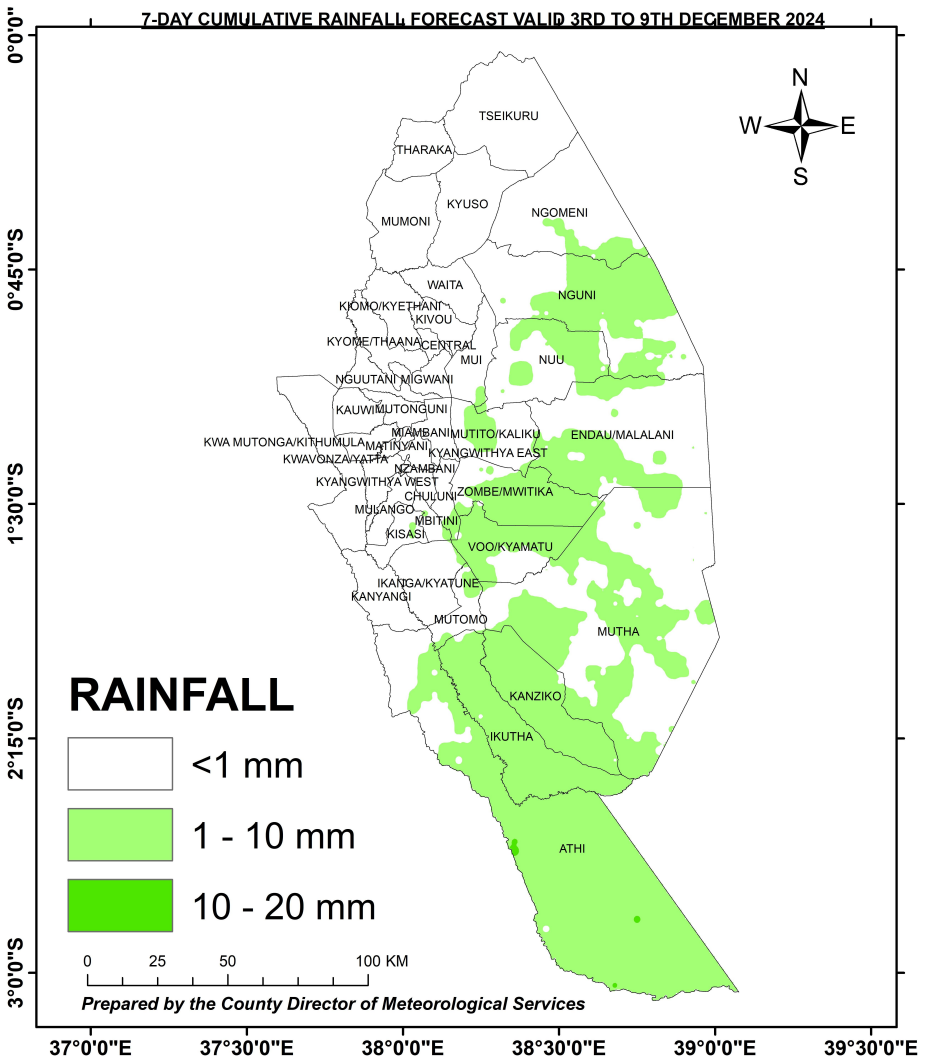
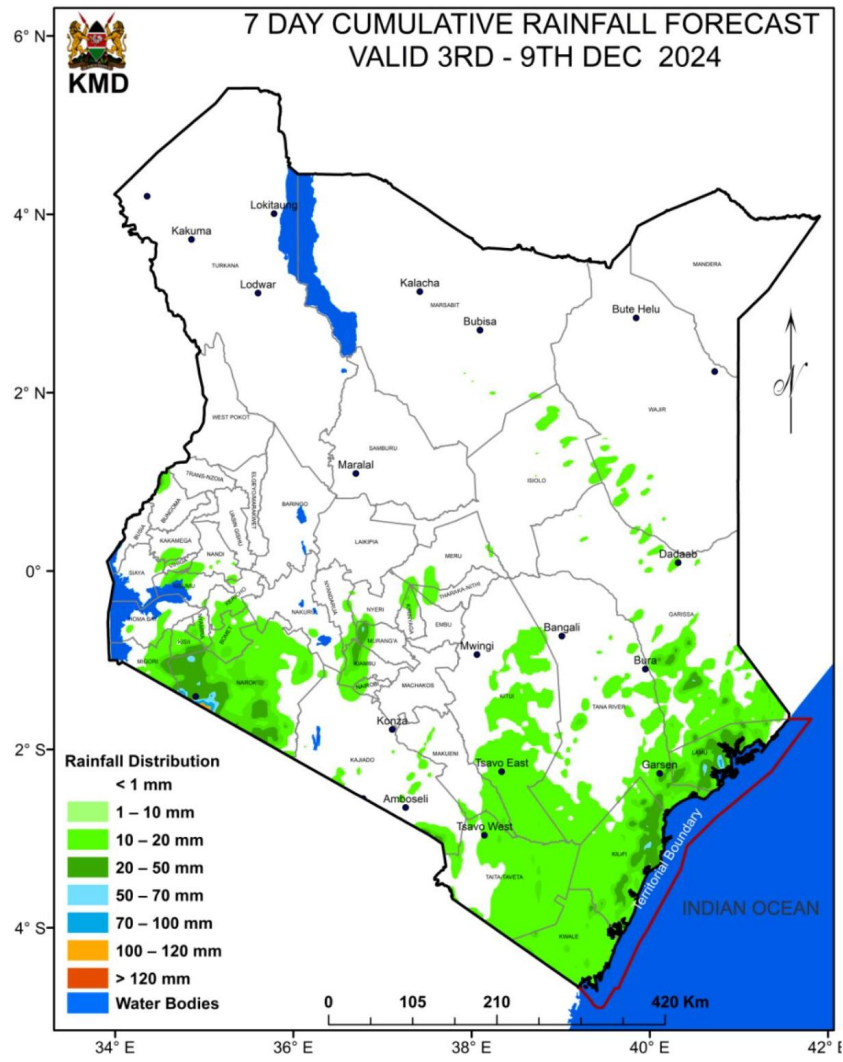
The Indian Ocean Dipole (IOD) has been in a negative phase since mid October but is expected to return to neutral conditions in December. Additionally, the Madden-Julian Oscillation (MJO) which was active over the Indian Ocean, and led to enhanced rainfall in parts of the country in November has moved into the maritime continent.

Temperature is expected to be warmer than average over the whole country with higher probabilities for warmer temperatures expected over the Southeastern and coastal parts of the country.

1.3 Outlook for December 2024 to February 2025

The outlook for the next three months indicates that most parts of the county will be generally sunny and dry in January and February, with rainfall expected primarily in December. However, some areas in the county may experience a few rainy days in January and February. Temperatures are expected to be warmer than average across the entire county, with higher probabilities of elevated temperatures in Kitui South, East and Mwingi North Sub-counties.

1.4 PART II: CUMULATIVE WEEKLY RAINFALL FORECAST MAPS



The weather forecast maps for Kenya and Kitui County; valid: 3rd to 9th December 2024

1.5 PART II: FURTHER ADVISORIES

SUMMARY ABOUT THE WEEKLY FORECAST:

Light morning rains as well as afternoon and night showers are expected over few places occasionally spreading to several places towards the end of the forecast period. Maximum temperatures are expected to range from 24°C - 33°C, while minimum temperatures are expected to range from 16°C - 22°C. Moderate North easterly to Easterly winds with speeds not exceeding 12.5 knots (6.5 m/s) are expected in most parts of the County. *In light of this weather forecast, farmers are also advised to consult with respective local extension officers from the County Ministry of Agriculture and Livestock at ward level for more advice on the best farm practices.*

Note: 1 mm of rainfall is equivalent to 1 litre of rainfall per square meter.

KEY OF SCIENTIFIC WORDS USED

Rainfall categories	
Range	Category
<5 mm	Light
5 - 20mm	Moderate
20 - 50mm	Heavy
>50mm	Very heavy

Rainfall coverage	
Term	Meaning
Most Places	Between 66% and 100%
Several Places	Between 33% and 66%
Few Places	Below 33%

Ushauri wa Idara ya Utabiri wa Hali ya Hewa:
Mvua za Vuli zitapungua wiki hii karibu maeneo yote ya Kaunti ya Kitui. Wakulima wanashauriwa kuendelea kupalilia mimea yao shambani ili isije ikasombwa na magugu. Pia huu utakuwa ni wakati mwema wa kunyunyizia mimea dawa hili kupigana na magonjwa na wadudu wanao haribu hio mimea.

For further information, please contact:



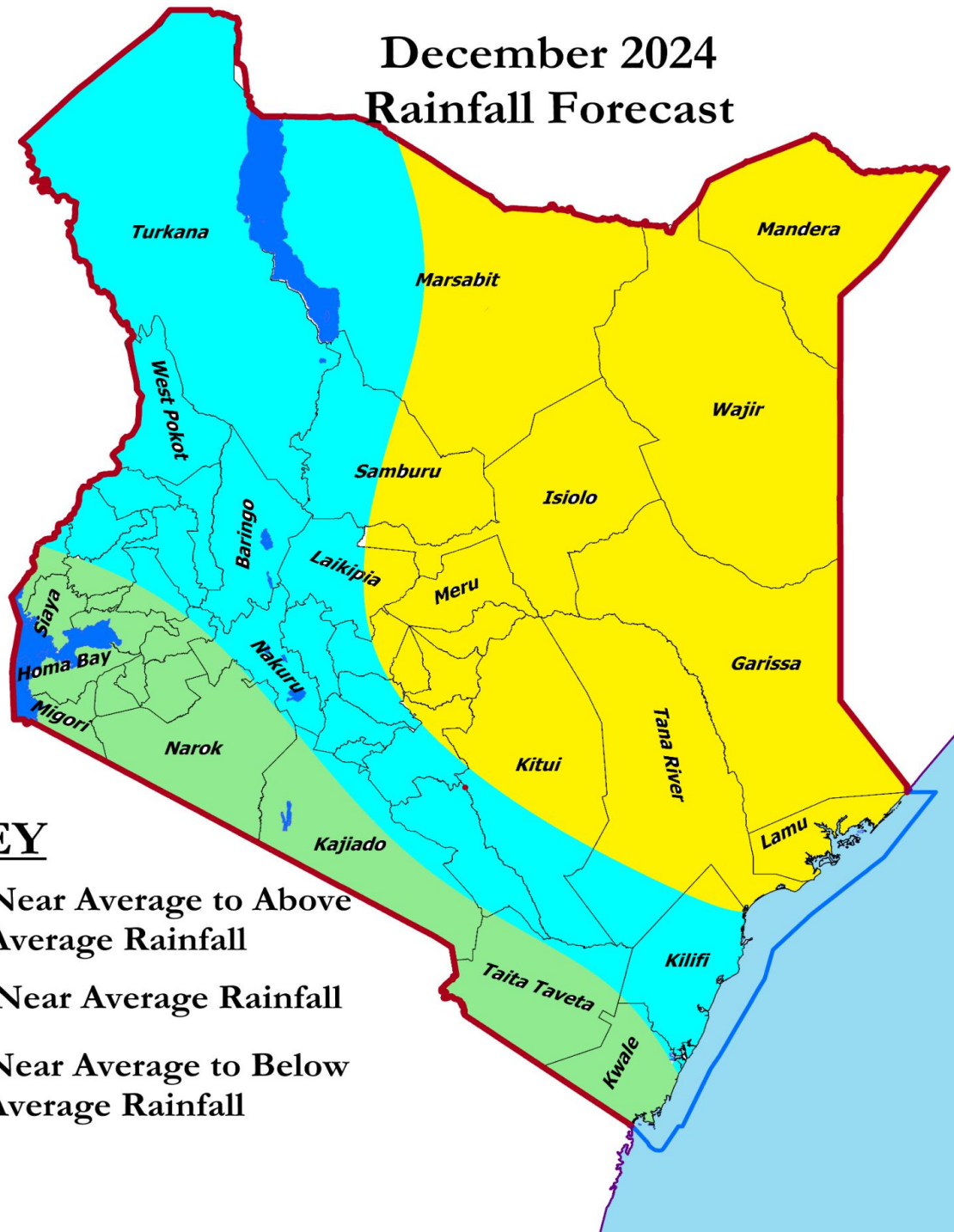
Daniel M. Mbithi
County Director of Meteorological Services
Mobile: 0715255171
Email: mbithi_d@yahoo.com

You can find more information about the climate and weather in Kenya on the KMD website

<http://www.meteo.go.ke/>

Annex I: Rainfall forecast for the month of December 2024

December 2024 Rainfall Forecast

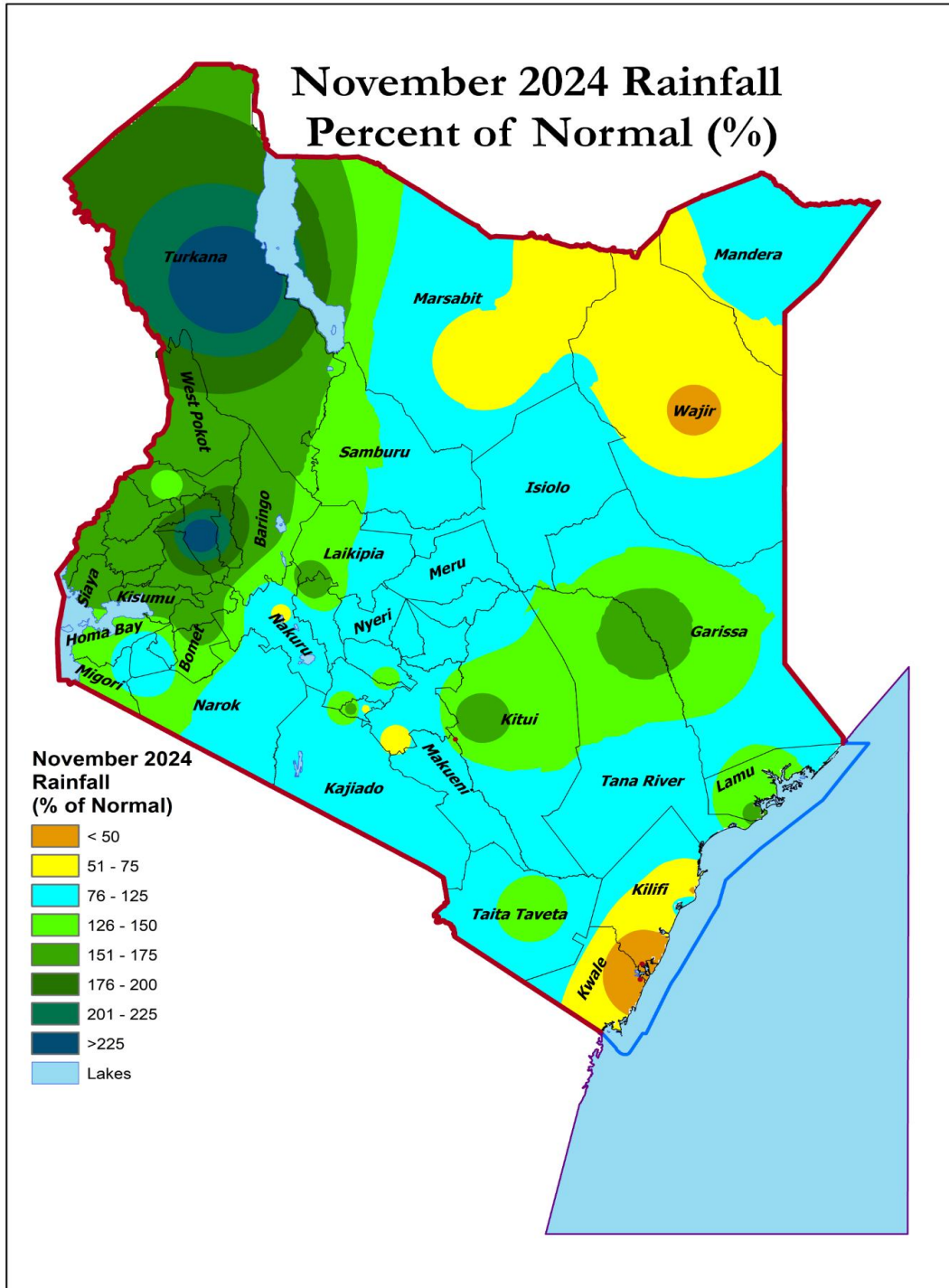


KEY

- Near Average to Above Average Rainfall
- Near Average Rainfall
- Near Average to Below Average Rainfall

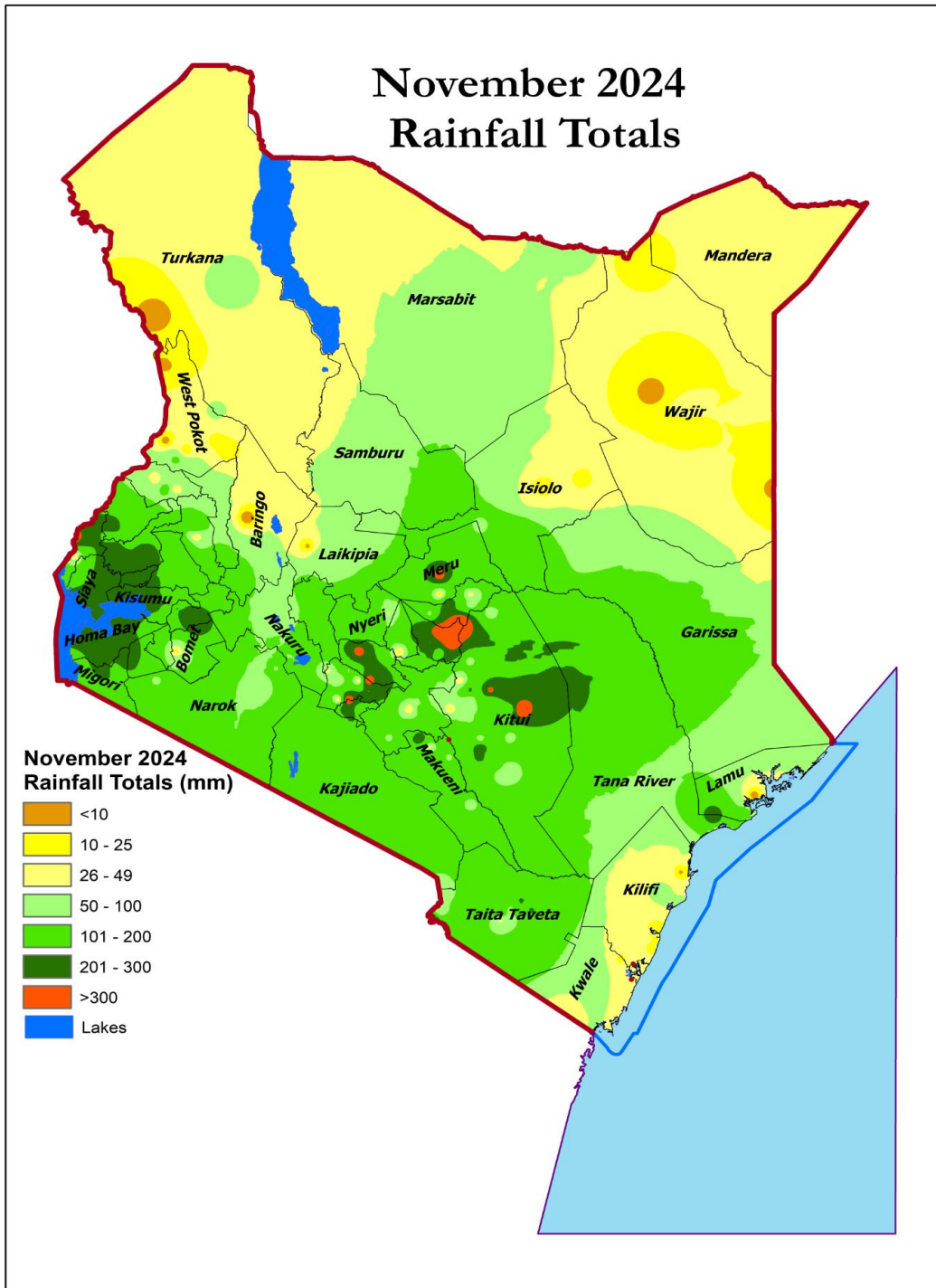
NB: Near average rainfall expected over several places during the month of December 2024 with more intensity to the southern sector of the County.

Annex II: Rainfall percentage of normal during November 2024



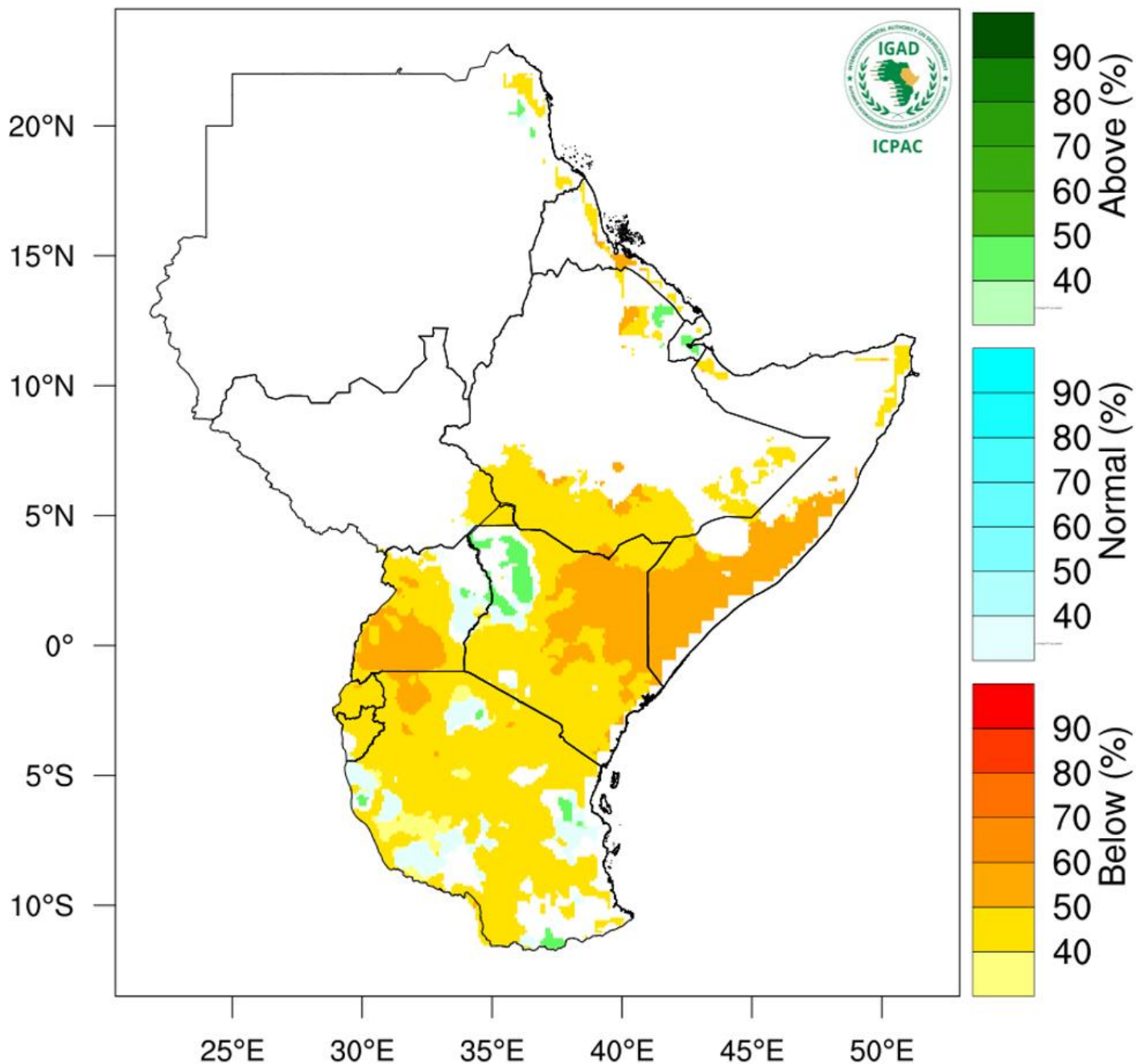
NB: November 2024 Rainfall (% of Rainfall)

Annex III: November 2024 rainfall totals



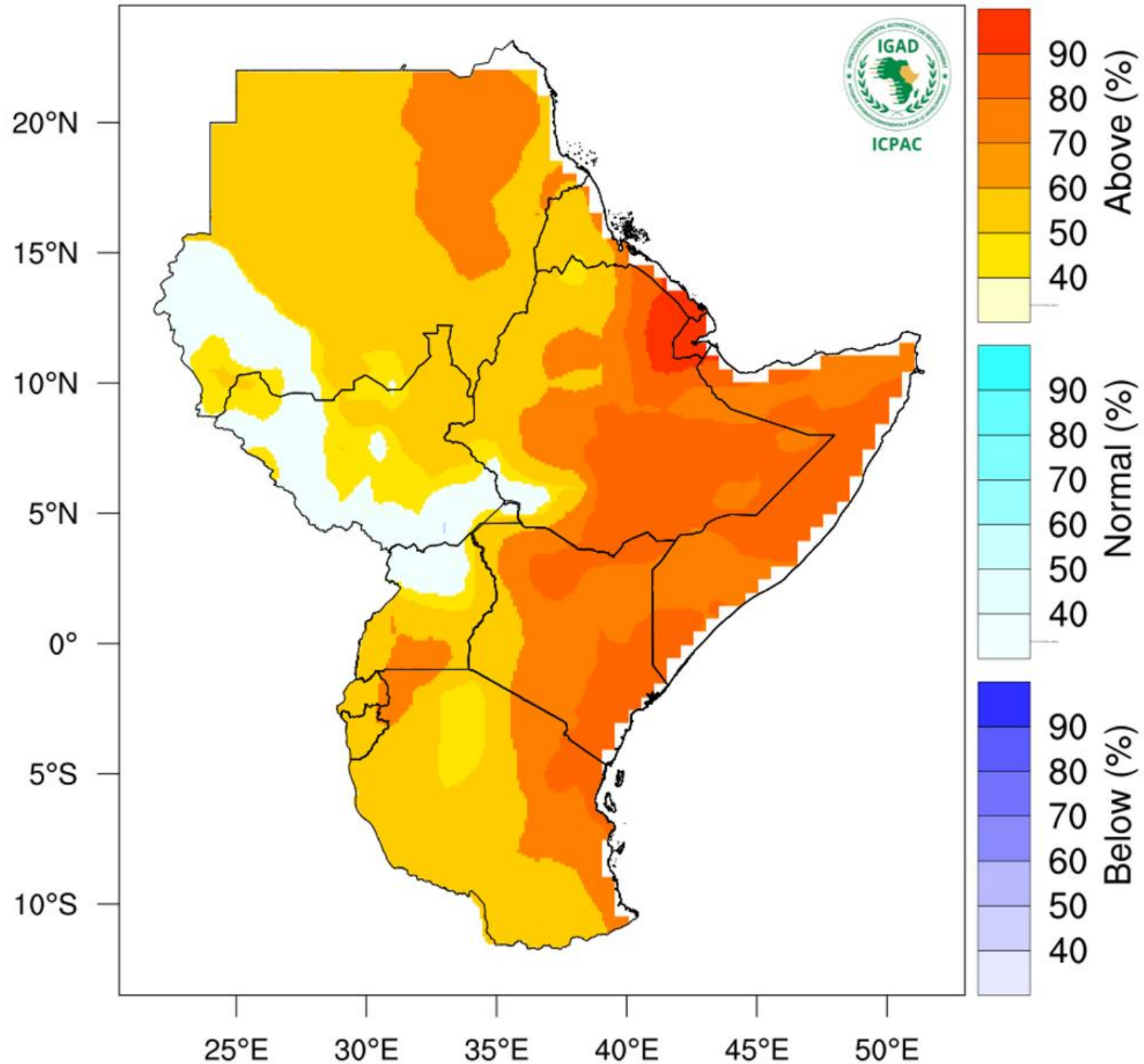
NB: : November 2024 Rainfall Totals

Rainfall Probabilistic Forecast for Nov 2024- Jan 2025



NB: Drier than usual conditions expected over most parts of the County between November 2024 and January 2025

Temperature Forecast for Nov 2024 - Jan 2025



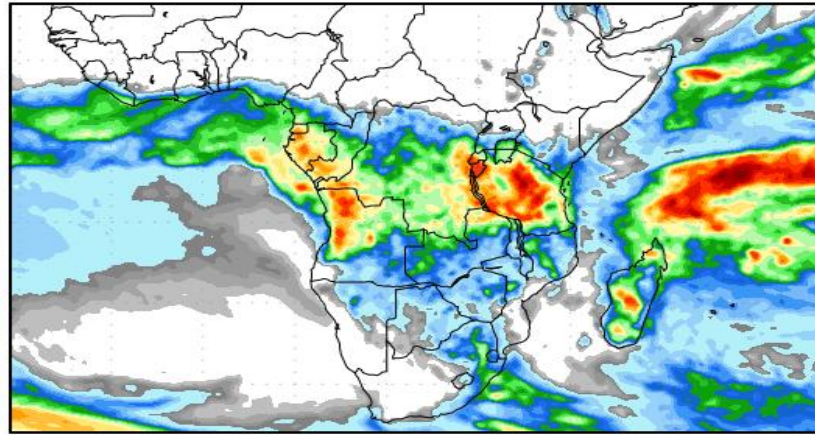
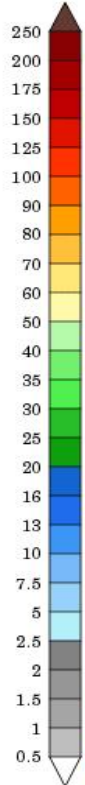
NB: Warmer than usual conditions indicated over most parts of Kitui County between November 2024 and January 2025

Annex VI: Rainfall forecast for 2nd to 18th December, 2024

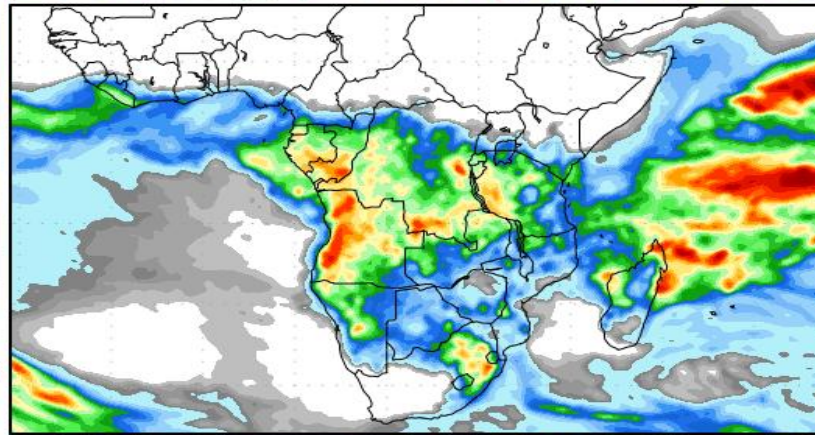
Precipitation Forecasts

Precipitation (mm)
during the period:

???, 02 DEC 2024 at 00Z
-to-
???, 10 DEC 2024 at 00Z

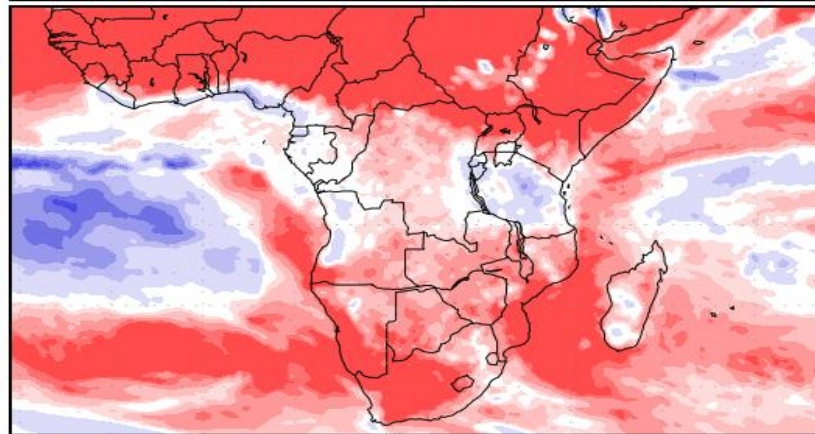
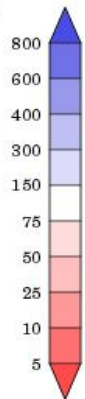


???, 10 DEC 2024 at 00Z
-to-
???, 18 DEC 2024 at 00Z



Precipitation (% of normal)
during the first period:

???, 02 DEC 2024 at 00Z
-to-
???, 10 DEC 2024 at 00Z



Precipitation forecasts from the National Centers for Environmental Prediction.
Normal rainfall derived from Xie-Arkin (CMAP) Monthly Climatology for 1979-2003.
Forecast Initialization Time: 00Z02DEC2024

NB: Near to below normal conditions expected over several parts of the County between 2nd to 18th December, 2024