



REPUBLIC OF KENYA
 MINISTRY OF ENVIRONMENT, CLIMATE CHANGE & FORESTRY
 KENYA METEOROLOGICAL DEPARTMENT

Dagoretti Corner, Ngong Road, P. O. Box 30259-00100, GPO, Nairobi, Kenya

Telephone: +254 (0) 20 38567880-7, +254 724 255 153-4

E-mail: director@meteo.go.ke, info@meteo.go.ke Website: https://www.meteo.go.ke

Our Ref: MET/7/286

Issue date: 25 November 2024

SEVEN-DAY WEATHER FORECAST VALID 26 NOVEMBER TO 2 DECEMBER 2024

HIGHLIGHTS

Forecast for 26 November to 2 December 2024

- Rainfall is expected to continue over the Highlands East and West of the Rift Valley, the Lake Victoria Basin, the Rift Valley, the South-eastern lowlands, the Coast, North-western and North-eastern Kenya.
- Isolated heavy rainfall events are likely to occur over some parts of these regions during the first half of the forecast period.

Weather Review for 18 to 24 November 2024

- Rainfall continued to be recorded in most parts of the country.
- Day-time (maximum) temperatures increased over some stations including Kangema, Nyeri and Nakuru and decreased over others such as Voi, Kisumu and Suba.
- Night-time (minimum) temperatures increased over a number of stations including Kitui, Nyahururu and Mandera and decreased over Laikipia, Lodwar and Meru among others.

1 FORECAST FOR 26 NOVEMBER TO 2 DECEMBER 2024

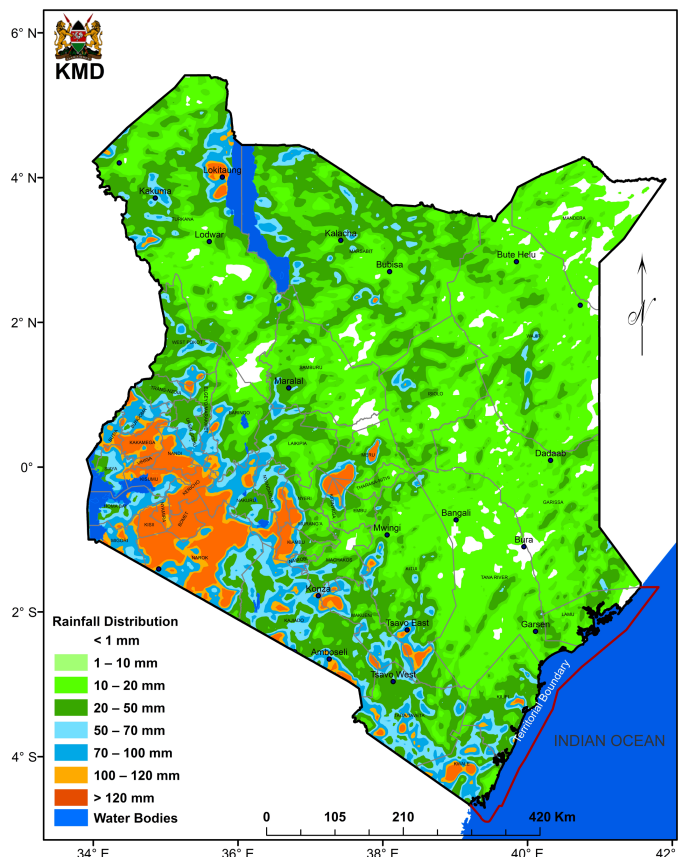
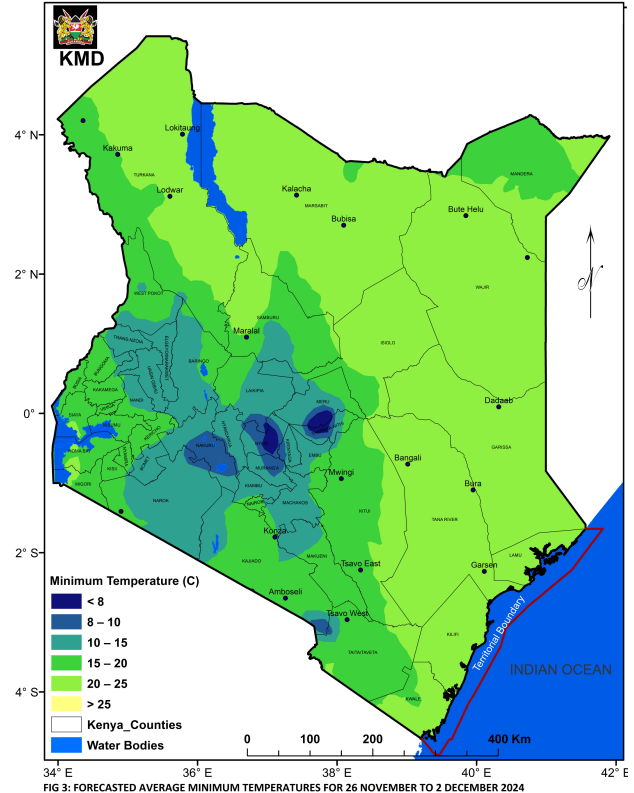
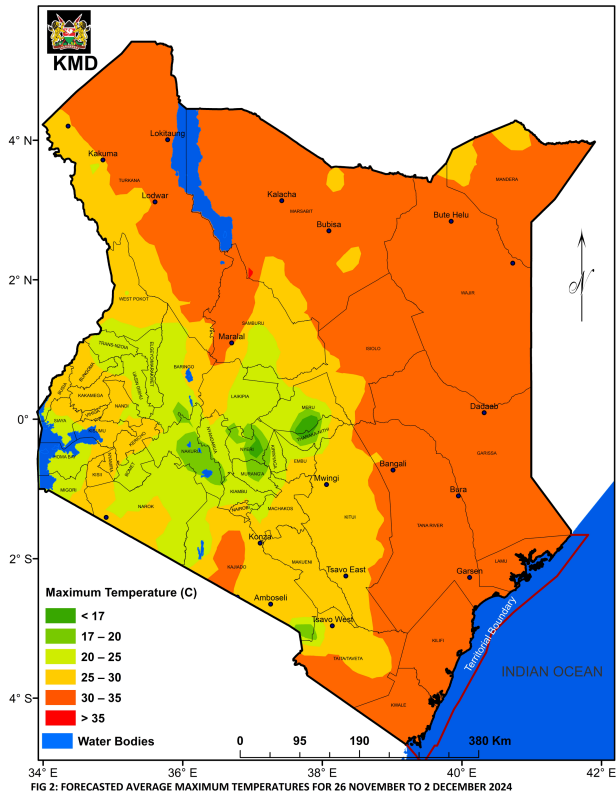


FIG 1: FORECASTED SEVEN-DAY TOTAL RAINFALL FOR 26 NOVEMBER TO 2 DECEMBER 2024

Rainfall is expected to continue over the Highlands East and West of the Rift Valley, the Lake Victoria Basin, the Rift Valley, the South-eastern lowlands, the Coast, North-western and North-eastern Kenya as shown in **Figure 1**. Isolated heavy rainfall events are likely to occur over some parts of these regions during the first half of the forecast period.

Average daytime (maximum) temperatures of more than 30°C will be experienced in the Coast, North-eastern and North-western Kenya as shown in **Figure 2**.

Average night-time (minimum) temperatures will be less than 10°C in some parts of the Highlands East of the Rift Valley, the Central Rift Valley and the South-eastern lowlands as shown in **Figure 3**.



1.1 DETAILED REGIONAL RAINFALL FORECAST FOR 26 NOVEMBER TO 2 DECEMBER 2024

1.1.1 The Highlands West of the Rift Valley, the Lake Victoria Basin and the Rift Valley (*Kisii, Nyamira, Nandi, Kericho, Bomet, Kakamega, Vihiga, Bungoma, Siaya, Kisumu, Homabay, Busia, Migori, Narok, Baringo, Nakuru, Trans-Nzoia, Uasin-Gishu, Elgeyo-Marakwet and West-Pokot Counties*):

Morning rains are expected over few places. Afternoon and night showers and thunderstorms are expected over several places during the first half of the forecast period reducing to few places thereafter.

1.1.2 North-western Kenya (*Turkana and Samburu Counties*):

Morning rains as well as afternoon and night showers and thunderstorms are expected over few places occasionally spreading to several places during the first half of the forecast period.

1.1.3 The Highlands East of the Rift Valley (including Nairobi County) (*Nyandarua, Laikipia, Nyeri, Kirinyaga, Murang'a, Kiambu, Meru, Embu, Tharaka-Nithi and Nairobi Counties*):

Morning rains are expected over few places. Afternoon and night showers and thunderstorms are expected over several places during the first half of the forecast period reducing to few places thereafter.

1.1.4 North-eastern Kenya (*Marsabit, Mandera, Wajir, Garissa and Isiolo Counties*):

Morning rains as well as afternoon and night showers and thunderstorms are expected over few places during the first half of the forecast period.

1.1.5 The South-eastern lowlands (*Machakos, Kitui, Makueni, Kajiado and Taita-Taveta Counties as well as the inland parts of Tana-River County*):

Morning rains as well as afternoon and night showers and thunderstorms are expected over few places.

1.1.6 The Coast (Mombasa, Kilifi, Lamu and Kwale Counties as well as the coastal parts of Tana-River County):

Morning, afternoon and night showers are expected over few places.

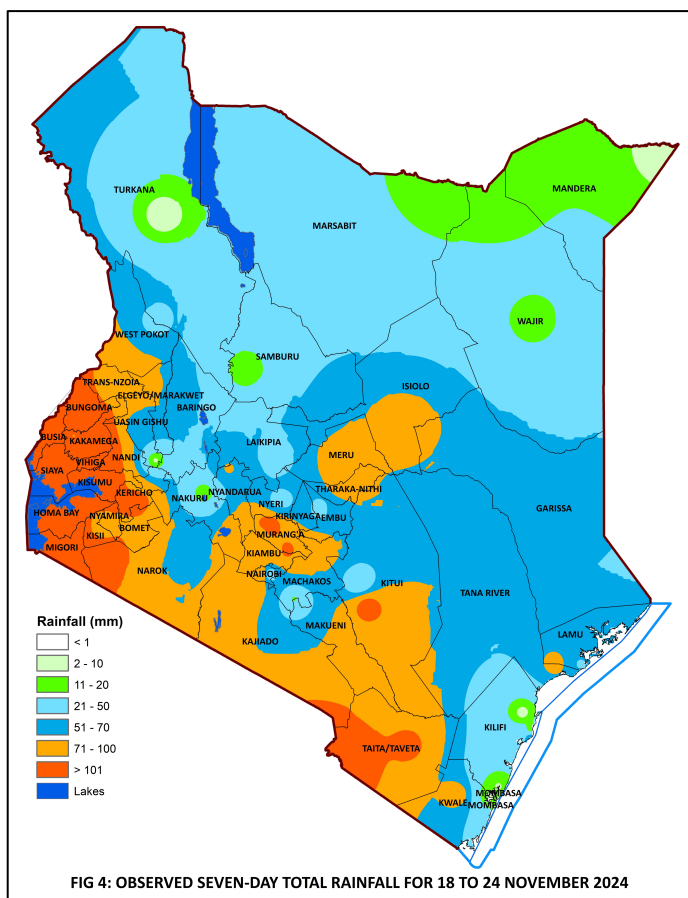
1.2 DETAILED TEMPERATURE FORECAST FOR 26 NOVEMBER TO 2 DECEMBER 2024

Expected maximum and minimum temperatures for selected towns and cities are shown in **Table 1**.

CITY/TOWN	MAX (°C)	MIN (°C)	CITY/TOWN	MAX (°C)	MIN (°C)	CITY/TOWN	MAX (°C)	MIN (°C)
LODWAR	38.0	24.0	KISUMU	32.0	18.0	THIKA	29.0	15.0
MARSABIT	27.0	18.0	SUBA	30.0	19.0	NGONG	24.0	13.0
MOYALE	32.0	19.0	NAKURU	27.0	12.0	MACHAKOS	27.0	15.0
GARISSA	36.0	24.0	NAROK	27.0	12.0	MAKINDU	32.0	19.0
WAJIR	35.0	25.0	LAIKIPIA	29.0	11.0	KITUI	29.0	18.0
MANDERA	36.0	25.0	NYAHURURU	22.0	07.0	VOI	35.0	21.0
KITALE	27.0	12.0	KANGEMA	27.0	15.0	LAMU	34.0	24.0
KAKAMEGA	30.0	15.0	NYERI	27.0	11.0	MALINDI	33.0	24.0
ELDORET	24.0	10.0	EMBU	27.0	14.0	MSABAHA	33.0	25.0
KERICHO	26.0	09.0	MERU	25.0	13.0	MTWAPA	33.0	24.0
KISII	26.0	16.0	NAIROBI	27.0	13.0	MOMBASA	34.0	25.0

2 WEATHER REVIEW FOR 18 TO 24 NOVEMBER 2024

2.1.1 Rainfall Review

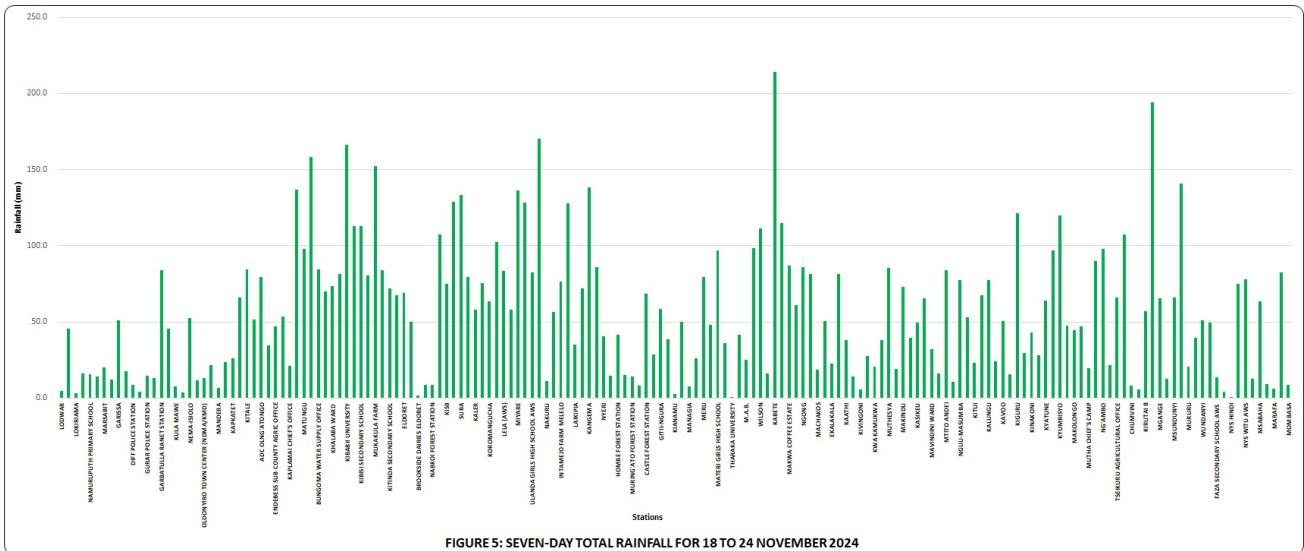


Rainfall was recorded in most parts of the country as shown in **Figures 4 & 5**.

Comparing the 11 to 17 November 2024 and the 18 to 24 November 2024 periods, it is noted that there was an increase in rainfall amounts over much of the Highlands West of the Rift Valley, North-western and North-eastern Kenya.

The highest seven-day rainfall total (214.0mm) was recorded at Kabete Meteorological Station in Nairobi County.

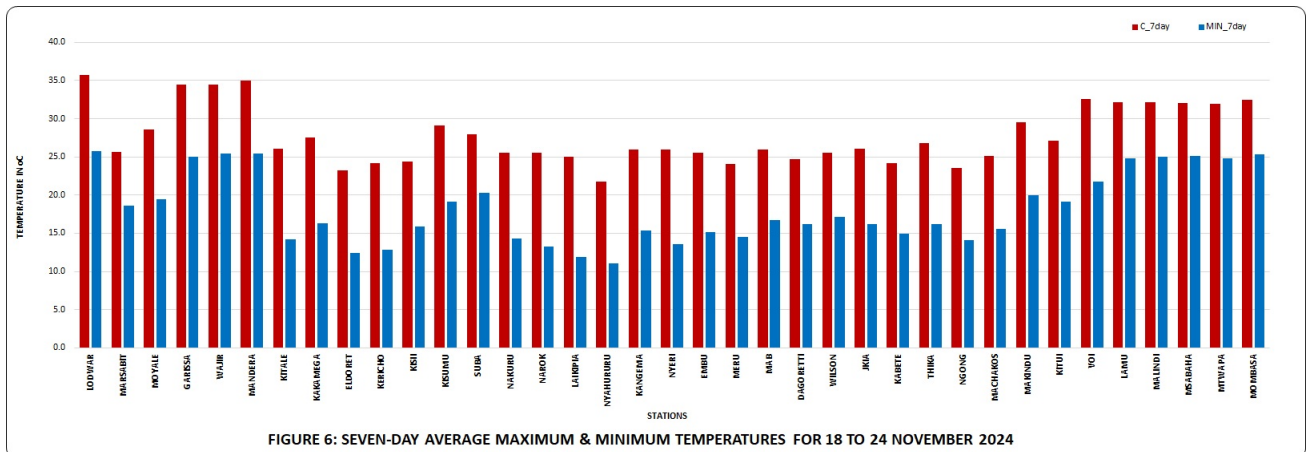
The same station recorded the highest amount of rainfall within 24-hours: 181.2mm on 24 November 2024.



2.2 Temperature Review

Comparing the 11 to 17 November 2024 and the 18 to 24 November 2024 periods, it is noted that day-time (maximum) temperatures increased over some stations including Kangema, Nyeri and Nakuru and decreased over others such as Voi, Kisumu and Suba. Night-time (minimum) temperatures increased over a number of stations including Kitui, Nyahururu and Mandera and decreased over Laikipia, Lodwar and Meru among others.

Lodwar Meteorological Station recorded the highest daily maximum temperature: 37.9°C on 18 November 2024 while Nyahururu Meteorological Station recorded the lowest daily minimum temperature: 6.8°C on the same day. The same stations recorded the highest seven-day average maximum temperature and the lowest seven-day average minimum temperature: 35.7°C and 11.1°C respectively (see Figure 6).



N.B: This forecast should be used in conjunction with the daily (24-hour) and five-day forecasts issued by this Department. County specific forecasts are available from the offices of respective County Directors of Meteorological Services.

KEY OF SCIENTIFIC WORDS USED

24-hour rainfall categories	
Range	Category
<5mm	Light
5-20mm	Moderate
20-50mm	Heavy
>50mm	Very heavy

Rainfall coverage	
Term	Meaning
Most places	Between 66% and 100%
Several places	Between 33% and 66%
Few places	Less than 33%



Dr. David Gikungu
DIRECTOR OF METEOROLOGICAL SERVICES